

For Research Use Only

SAAL1 Polyclonal antibody

Catalog Number: 25467-1-AP **2 Publications**



Basic Information

Catalog Number: 25467-1-AP	GenBank Accession Number: BC012010	Purification Method: Antigen affinity purification
Size: 350 µg/ml	GeneID (NCBI): 113174	Recommended Dilutions: WB 1:500-1:1000 IF 1:20-1:200
Source: Rabbit	UNIPROT ID: Q96ER3	
Isotype: IgG	Full Name: serum amyloid A-like 1	
Immunogen Catalog Number: AG22186	Calculated MW: 475 aa, 54 kDa	
	Observed MW: 54-55 kDa	

Applications

Tested Applications: IF/ICC, WB, ELISA	Positive Controls: WB : HepG2 cells, HEK-293 cells IF : HepG2 cells,
Cited Applications: WB	
Species Specificity: human	
Cited Species: human, mouse	

Background Information

Notable Publications

Author	Pubmed ID	Journal	Application
Song Tong	36973678	BMC Cancer	WB
Jingyi Wu	37007016	Front Pharmacol	WB

Storage

Storage:
Store at -20°C. Stable for one year after shipment.
Storage Buffer:
PBS with 0.02% sodium azide and 50% glycerol pH 7.3.
Aliquoting is unnecessary for -20°C storage

For technical support and original validation data for this product please contact:

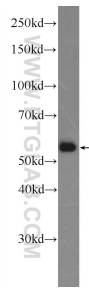
T: 4006900926

E: Proteintech-CN@ptglab.com

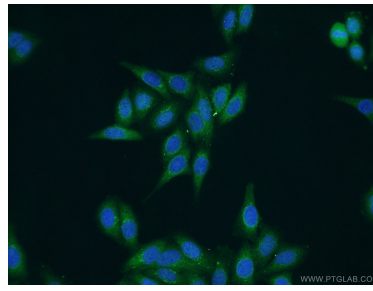
W: ptgcn.com

This product is exclusively available under Proteintech Group brand and is not available to purchase from any other manufacturer.

Selected Validation Data



HepG2 cells were subjected to SDS PAGE followed by western blot with 25467-1-AP (SAAL1 Antibody) at dilution of 1:600 incubated at room temperature for 1.5 hours.



Immunofluorescent analysis of HepG2 cells using 25467-1-AP (SAAL1 antibody) at dilution of 1:50 and Alexa Fluor 488-conjugated AffiniPure Goat Anti-Rabbit IgG(H+L).