

For Research Use Only

C1orf56 Polyclonal antibody

Catalog Number: 25433-1-AP

1 Publications



Basic Information

Catalog Number:

25433-1-AP

Concentration:

1200 ug/ml

Source:

Rabbit

Isotype:

IgG

Immunogen Catalog Number:

AG13860

GenBank Accession Number:

BC002469

GeneID (NCBI):

54964

UNIPROT ID:

Q9BUN1

Full Name:

chromosome 1 open reading frame 56

Calculated MW:

341 aa, 37 kDa

Observed MW:

35-37 kDa

Purification Method:

Antigen affinity purification

Recommended Dilutions:

WB: 1:500-1:1000

IHC: 1:20-1:200

Applications

Tested Applications:

WB, IHC, ELISA

Cited Applications:

WB

Species Specificity:

human, mouse

Cited Species:

human

Note-IHC: suggested antigen retrieval with TE buffer pH 9.0; (*) Alternatively, antigen retrieval may be performed with citrate buffer pH 6.0

Positive Controls:

WB : mouse testis tissue,

IHC : human liver cancer tissue,

Background Information

C1orf56, also named as MENT, is involved in control of cellular proliferation. It is extreme expressed in several cancers especially in neuroblastoma. We detected the endogenous protein 35 kDa in mouse testis.

Notable Publications

Author	Pubmed ID	Journal	Application
Chenghao Zhanghuang	35558559	Front Mol Biosci	WB

Storage

Storage:

Store at -20°C. Stable for one year after shipment.

Storage Buffer:

PBS with 0.02% sodium azide and 50% glycerol, pH7.3

Aliquoting is unnecessary for -20°C storage

For technical support and original validation data for this product please contact:

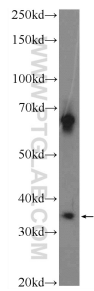
T: 4006900926

E: Proteintech-CN@ptglab.com

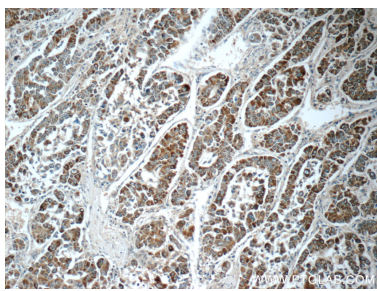
W: ptgcn.com

This product is exclusively available under Proteintech Group brand and is not available to purchase from any other manufacturer.

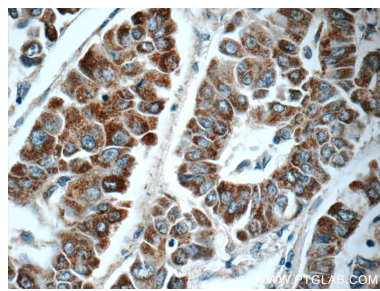
Selected Validation Data



mouse testis tissue were subjected to SDS PAGE followed by western blot with 25433-1-AP (C1orf56 Antibody) at dilution of 1:600 incubated at room temperature for 1.5 hours.



Immunohistochemical analysis of paraffin-embedded human liver cancer tissue slide using 25433-1-AP (C1orf56 Antibody) at dilution of 1:50 (under 10x lens).



Immunohistochemical analysis of paraffin-embedded human liver cancer tissue slide using 25433-1-AP (C1orf56 Antibody) at dilution of 1:50 (under 40x lens).