

For Research Use Only

BIVM Polyclonal antibody

Catalog Number: 25432-1-AP



Basic Information

Catalog Number:

25432-1-AP

Size:

500 µg/ml

Source:

Rabbit

Isotype:

IgG

Immunogen Catalog Number:

AG22087

GenBank Accession Number:

BC075084

GeneID (NCBI):

54841

UNIPROT ID:

Q86UB2

Full Name:

basic, immunoglobulin-like variable motif containing

Calculated MW:

503 aa, 57 kDa

Observed MW:

32 kDa

Purification Method:

Antigen affinity purification

Recommended Dilutions:

WB 1:500-1:2000

IHC 1:20-1:200

Applications

Tested Applications:

IHC, WB, ELISA

Species Specificity:

human

Note-IHC: suggested antigen retrieval with TE buffer pH 9.0; (*) Alternatively, antigen retrieval may be performed with citrate buffer pH 6.0

Positive Controls:

WB: Raji cells,

IHC: human ovary tissue,

Background Information

BIVM has been identified using an electronic search based on the conservation of short sequence motifs within the variable region of immunoglobulin (Ig) genes. It is tightly linked (41 bp) and in the opposite transcriptional orientation to MGC5302 (also known as KDE1 and EP58) in human. BIVM has two isoforms with MW 57 kDa and 32 kDa.

Storage

Storage:

Store at -20°C. Stable for one year after shipment.

Storage Buffer:

PBS with 0.02% sodium azide and 50% glycerol pH 7.3.

Aliquoting is unnecessary for -20°C storage

For technical support and original validation data for this product please contact:

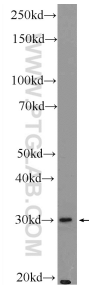
T: 4006900926

E: Proteintech-CN@ptglab.com

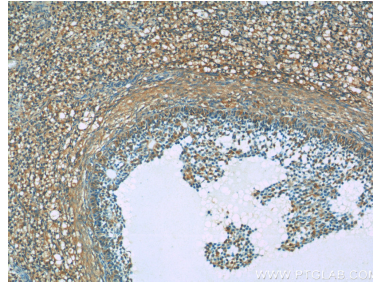
W: ptgcn.com

This product is exclusively available under Proteintech Group brand and is not available to purchase from any other manufacturer.

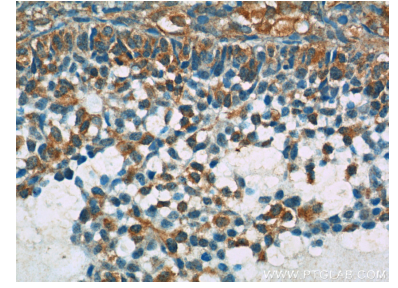
Selected Validation Data



Raji cells were subjected to SDS PAGE followed by western blot with 25432-1-AP (BIVM Antibody) at dilution of 1:1000 incubated at room temperature for 1.5 hours.



Immunohistochemical analysis of paraffin-embedded human ovary tissue slide using 25432-1-AP (BIVM Antibody) at dilution of 1:50 (under 10x lens).



Immunohistochemical analysis of paraffin-embedded human ovary tissue slide using 25432-1-AP (BIVM Antibody) at dilution of 1:50 (under 40x lens).