

For Research Use Only

OTUD6B Polyclonal antibody

Catalog Number: 25430-1-AP

Featured Product

2 Publications



Basic Information

Catalog Number:

25430-1-AP

Size:

800 ug/ml

Source:

Rabbit

Isotype:

IgG

Immunogen Catalog Number:

AG22044

GenBank Accession Number:

BC029760

GeneID (NCBI):

51633

UNIPROT ID:

Q8N6M0

Full Name:

OTU domain containing 6B

Calculated MW:

293 aa, 34 kDa

Observed MW:

34-40 kDa

Purification Method:

Antigen affinity purification

Recommended Dilutions:

WB 1:2000-1:10000

IHC 1:2000-1:8000

IF/ICC 1:50-1:500

Applications

Tested Applications:

WB, IHC, IF/ICC, ELISA

Cited Applications:

WB, IHC, IF

Species Specificity:

human

Cited Species:

human, mouse

Note-IHC: suggested antigen retrieval with TE buffer pH 9.0; (*) Alternatively, antigen retrieval may be performed with citrate buffer pH 6.0

Positive Controls:

WB : HEK-293 cells, HeLa cells, Jurkat cells, MCF-7 cells, PC-3 cells

IHC : human ovary cancer tissue,

IF/ICC : PC-3 cells,

Background Information

Notable Publications

Author	Pubmed ID	Journal	Application
Guoqiang Xing	39192576	Cell Biol Int	IHC, IF
Yu Liu	38878112	Cell Mol Life Sci	WB

Storage

Storage:

Store at -20°C. Stable for one year after shipment.

Storage Buffer:

PBS with 0.02% sodium azide and 50% glycerol pH 7.3.

Aliquoting is unnecessary for -20°C storage

For technical support and original validation data for this product please contact:

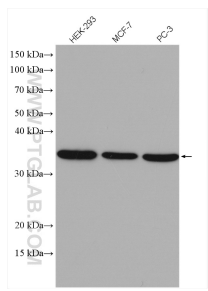
T: 4006900926

E: Proteintech-CN@ptglab.com

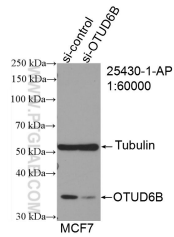
W: ptgcn.com

This product is exclusively available under Proteintech Group brand and is not available to purchase from any other manufacturer.

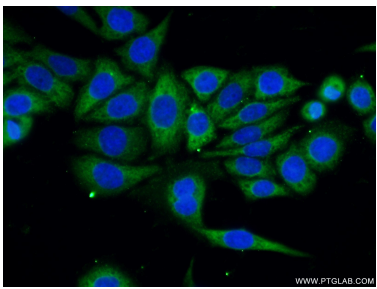
Selected Validation Data



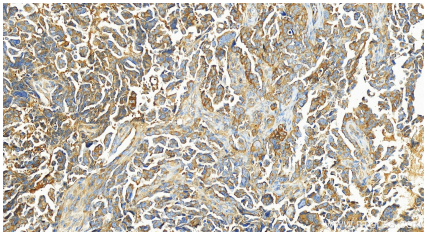
Various lysates were subjected to SDS PAGE followed by western blot with 25430-1-AP (OTUD6B antibody) at dilution of 1:5000 incubated at room temperature for 1.5 hours.



WB result of OTUD6B antibody (25430-1-AP; 1:60000; incubated at room temperature for 1.5 hours) with sh-Control and sh-OTUD6B transfected HeLa cells.



Immunofluorescent analysis of (-20°C Ethanol) fixed PC-3 cells using 25430-1-AP (OTUD6B antibody) at dilution of 1:50 and Alexa Fluor 488-conjugated AffiniPure Goat Anti-Rabbit IgG(H+L).



Immunohistochemical analysis of paraffin-embedded human ovarian cancer slide using 25430-1-AP (OTUD6B antibody) at dilution of 1:4000 (under 20x lens). Heat mediated antigen retrieval with Tris-EDTA buffer (pH 9.0).