

For Research Use Only

PPRC1 Polyclonal antibody

Catalog Number: 25429-1-AP **1 Publications**



Basic Information

Catalog Number:

25429-1-AP

Size:

500 µg/ml

Source:

Rabbit

Isotype:

IgG

Immunogen Catalog Number:

AG11940

GenBank Accession Number:

BC063806

GeneID (NCBI):

23082

UNIPROT ID:

Q5VV67

Full Name:

peroxisome proliferator-activated
receptor gamma, coactivator-related
1

Calculated MW:

1542 aa, 165 kDa

Observed MW:

177 kDa

Purification Method:

Antigen affinity purification

Recommended Dilutions:

WB 1:200-1:1000

Applications

Tested Applications:

WB, ELISA

Cited Applications:

WB

Species Specificity:

human, mouse, rat

Cited Species:

human

Positive Controls:

WB : NIH/3T3 cells, C6 cells

Background Information

Peroxisome proliferator-activated receptor gamma, co-activator-related 1 (Ppcc1) is the third member of the Pgc1 family, which contributes to mitochondrial biogenesis and orchestrates response to metabolic stress by promoting the expression of multiple genes specifying inflammation, proliferation, and metabolic reprogramming.

Notable Publications

Author	Pubmed ID	Journal	Application
Mengjie Zhao	36696363	Cancer Res	WB

Storage

Storage:

Store at -20°C. Stable for one year after shipment.

Storage Buffer:

PBS with 0.02% sodium azide and 50% glycerol pH 7.3.

Aliquoting is unnecessary for -20°C storage

For technical support and original validation data for this product please contact:

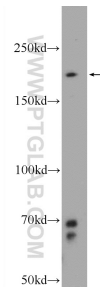
T: 4006900926

E: Proteintech-CN@ptglab.com

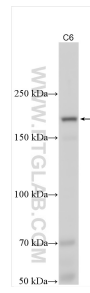
W: ptgcn.com

This product is exclusively available under Proteintech Group brand and is not available to purchase from any other manufacturer.

Selected Validation Data



NIH/3T3 cells were subjected to SDS PAGE followed by western blot with 25429-1-AP (PPRC1 Antibody) at dilution of 1:300 incubated at room temperature for 1.5 hours.



Various lysates were subjected to SDS PAGE followed by western blot with 25429-1-AP (PPRC1 antibody) at dilution of 1:500 incubated at room temperature for 1.5 hours.