

For Research Use Only

GAS2L3 Polyclonal antibody, PBS Only

Catalog Number: 25409-1-PBS



Basic Information

Catalog Number:

25409-1-PBS

Concentration:

1 mg/ml

Source:

Rabbit

Isotype:

IgG

Immunogen Catalog Number:

AG22097

GenBank Accession Number:

BC043366

GeneID (NCBI):

283431

UNIPROT ID:

Q86X01

Full Name:

growth arrest-specific 2 like 3

Calculated MW:

694 aa, 75 kDa

Observed MW:

75 kDa

Purification Method:

Antigen affinity purification

Applications

Tested Applications:

WB, IHC, Indirect ELISA

Species Specificity:

human, mouse, rat

Background Information

GAS2L3 also known as G2L3, belongs to the GAS2 family of four related proteins. It contains an N-terminal calponin homology (CH) domain and a C-terminal GAS2-related (GAR) domain, which are putative actin and microtubule binding domains. GAS2L3 is specifically expressed in mitosis and it localizes to the midbody and the constriction zone during cytokinesis (PMID: 28937871).

Storage

Storage:

Store at -80°C.

The product is shipped with ice packs. Upon receipt, store it immediately at -80°C

Storage Buffer:

PBS only, pH7.3

For technical support and original validation data for this product please contact:

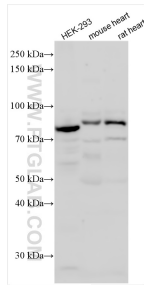
T: 4006900926

E: Proteintech-CN@ptglab.com

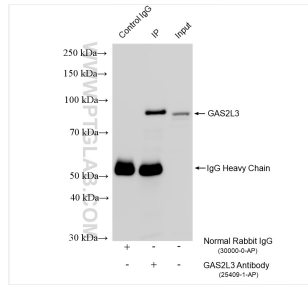
W: ptgcn.com

This product is exclusively available under Proteintech Group brand and is not available to purchase from any other manufacturer.

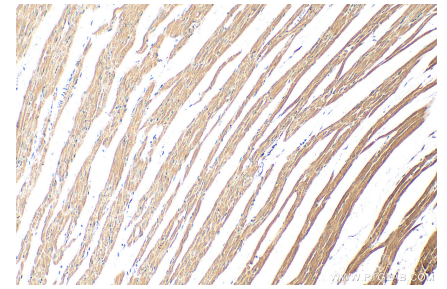
Selected Validation Data



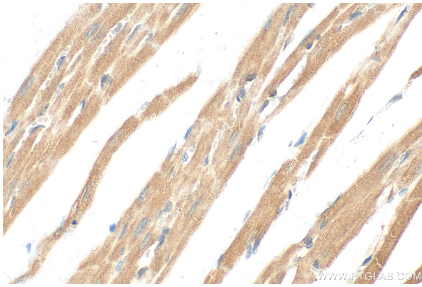
Various lysates were subjected to SDS PAGE followed by western blot with 25409-1-AP (GAS2L3 antibody) at dilution of 1:1500 incubated at room temperature for 1.5 hours. This data was developed using the same antibody clone with 25409-1-PBS in a different storage buffer formulation.



IP result of anti-GAS2L3 (IP:25409-1-AP, 4ug; Detection:25409-1-AP 1:1000) with HEK-293 cells lysate 1800 ug. This data was developed using the same antibody clone with 25409-1-PBS in a different storage buffer formulation.



Immunohistochemical analysis of paraffin-embedded rat heart tissue slide using 25409-1-AP (GAS2L3 antibody) at dilution of 1:200 (under 10x lens). Heat mediated antigen retrieval with Tris-EDTA buffer (pH 9.0). This data was developed using the same antibody clone with 25409-1-PBS in a different storage buffer formulation.



Immunohistochemical analysis of paraffin-embedded rat heart tissue slide using 25409-1-AP (GAS2L3 antibody) at dilution of 1:200 (under 40x lens). Heat mediated antigen retrieval with Tris-EDTA buffer (pH 9.0). This data was developed using the same antibody clone with 25409-1-PBS in a different storage buffer formulation.