

For Research Use Only

# FAM160B1 Polyclonal antibody

Catalog Number: 25388-1-AP



## Basic Information

**Catalog Number:**

25388-1-AP

**Size:**

600 µg/ml

**Source:**

Rabbit

**Isotype:**

IgG

**Immunogen Catalog Number:**

AG22051

**GenBank Accession Number:**

BC037207

**GeneID (NCBI):**

57700

**UNIPROT ID:**

Q5W0V3

**Full Name:**

family with sequence similarity 160, member B1

**Calculated MW:**

765 aa, 86 kDa

**Observed MW:**

105 kDa

**Purification Method:**

Antigen affinity purification

**Recommended Dilutions:**

WB 1:500-1:1000

IP 0.5-4.0 µg for 1.0-3.0 mg of total protein lysate

IF 1:20-1:200

## Applications

**Tested Applications:**

IF/ICC, IP, WB, ELISA

**Species Specificity:**

human

**Positive Controls:**

WB : PC-3 cells,

IP : PC-3 cells,

IF : PC-3 cells,

## Background Information

FAM160B1, also named as KIAA1600, is a 765 amino acid protein, which belongs to the UPF0518 family. The biological function of FAM160B1 is still non-known. FAM160B1 exists as two isoforms and the molecular weight of isoform one is a 86 kDa protein. The isoform two is produced by alternative splicing and is a 83 kDa protein. There are modified residues of FAM160B1 protein, so we detected 95 kDa and 100 kDa two bands by western blotting.

## Storage

**Storage:**

Store at -20°C. Stable for one year after shipment.

**Storage Buffer:**

PBS with 0.02% sodium azide and 50% glycerol pH 7.3.

Aliquoting is unnecessary for -20°C storage

For technical support and original validation data for this product please contact:

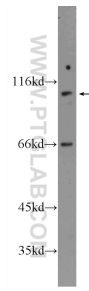
T: 4006900926

E: [Proteintech-CN@ptglab.com](mailto:Proteintech-CN@ptglab.com)

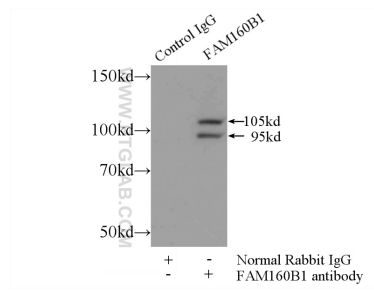
W: [ptgcn.com](http://ptgcn.com)

**This product is exclusively available under Proteintech Group brand and is not available to purchase from any other manufacturer.**

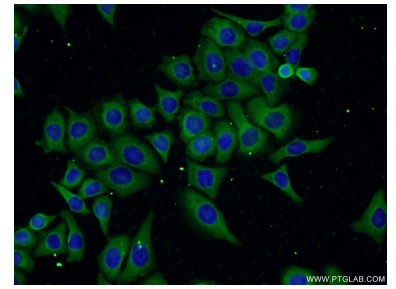
## Selected Validation Data



PC-3 cells were subjected to SDS PAGE followed by western blot with 25388-1-AP (FAM160B1 Antibody) at dilution of 1:600 incubated at room temperature for 1.5 hours.



IP result of anti-FAM160B1 (IP:25388-1-AP, 5ug; Detection:25388-1-AP 1:300) with PC-3 cells lysate 1500ug.



Immunofluorescent analysis of PC-3 cells using 25388-1-AP (FAM160B1 antibody) at dilution of 1:50 and Alexa Fluor 488-conjugated AffiniPure Goat Anti-Rabbit IgG(H+L).