

For Research Use Only

PROC Polyclonal antibody, PBS Only

Catalog Number: 25382-1-PBS



Basic Information

Catalog Number:

25382-1-PBS

Size:

1 mg/ml

Source:

Rabbit

Isotype:

IgG

Immunogen Catalog Number:

AG11328

GenBank Accession Number:

BC034377

GeneID (NCBI):

5624

UNIPROT ID:

P04070

Full Name:

protein C (inactivator of coagulation factors Va and VIIIa)

Calculated MW:

461 aa, 52 kDa

Observed MW:

52 kDa

Purification Method:

Antigen affinity purification

Applications

Tested Applications:

WB, IHC, IF/ICC, Indirect ELISA

Species Specificity:

human, mouse

Background Information

PROC belongs to the peptidase S1 family. PROC is a vitamin K-dependent serine protease that regulates blood coagulation by inactivating factors Va and VIIIa in the presence of calcium ions and phospholipids (PMID:25618265). It exerts a protective effect on the endothelial cell barrier function (PMID:25651845).

Storage

Storage:

Store at -80°C.

The product is shipped with ice packs. Upon receipt, store it immediately at -80°C

Storage Buffer:

PBS Only

For technical support and original validation data for this product please contact:

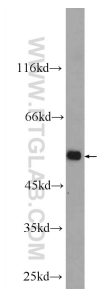
T: 4006900926

E: Proteintech-CN@ptglab.com

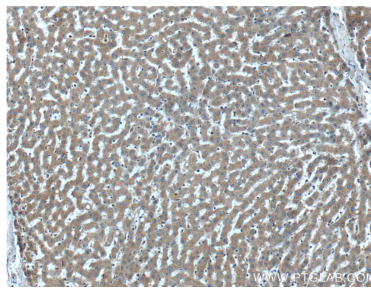
W: ptgcn.com

This product is exclusively available under Proteintech Group brand and is not available to purchase from any other manufacturer.

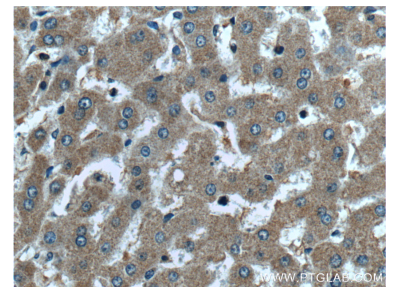
Selected Validation Data



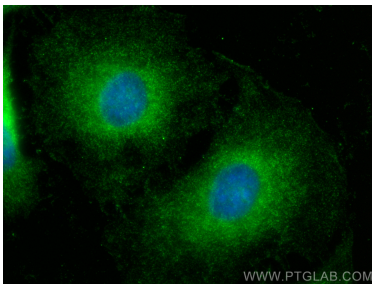
mouse liver tissue were subjected to SDS PAGE followed by western blot with 25382-1-AP (PROC Antibody) at dilution of 1:1000 incubated at room temperature for 1.5 hours. This data was developed using the same antibody clone with 25382-1-PBS in a different storage buffer formulation.



Immunohistochemical analysis of paraffin-embedded human liver tissue slide using 25382-1-AP (PROC Antibody) at dilution of 1:200 (under 10x lens). This data was developed using the same antibody clone with 25382-1-PBS in a different storage buffer formulation.



Immunohistochemical analysis of paraffin-embedded human liver tissue slide using 25382-1-AP (PROC Antibody) at dilution of 1:200 (under 40x lens). This data was developed using the same antibody clone with 25382-1-PBS in a different storage buffer formulation.



Immunofluorescent analysis of (-20°C Ethanol) fixed HeLa cells using PROC antibody (25382-1-AP) at dilution of 1:200 and Multi-rAb CoraLite® Plus 488-Goat Anti-Rabbit Recombinant Secondary Antibody (H+L) (RGAR002). This data was developed using the same antibody clone with 25382-1-PBS in a different storage buffer formulation.