

For Research Use Only

PROC Polyclonal antibody

Catalog Number: 25382-1-AP

1 Publications



Basic Information

Catalog Number:

25382-1-AP

Size:

550 ug/ml

Source:

Rabbit

Isotype:

IgG

Immunogen Catalog Number:

AG11328

GenBank Accession Number:

BC034377

GeneID (NCBI):

5624

UNIPROT ID:

P04070

Full Name:

protein C (inactivator of coagulation factors Va and VIIIa)

Calculated MW:

461 aa, 52 kDa

Observed MW:

52 kDa

Purification Method:

Antigen affinity purification

Recommended Dilutions:

WB 1:500-1:2000

IHC 1:50-1:500

IF/ICC 1:50-1:500

Applications

Tested Applications:

WB, IHC, IF/ICC, ELISA

Cited Applications:

IHC

Species Specificity:

human, mouse

Cited Species:

human

Note-IHC: suggested antigen retrieval with TE buffer pH 9.0; (*) Alternatively, antigen retrieval may be performed with citrate buffer pH 6.0

Positive Controls:

WB : mouse liver tissue,

IHC : human liver tissue,

IF/ICC : HeLa cells,

Background Information

PROC belongs to the peptidase S1 family. PROC is a vitamin K-dependent serine protease that regulates blood coagulation by inactivating factors Va and VIIIa in the presence of calcium ions and phospholipids (PMID:25618265). It exerts a protective effect on the endothelial cell barrier function (PMID:25651845).

Notable Publications

Author	Pubmed ID	Journal	Application
Jingyao Chen	37274740	Front Cell Dev Biol	IHC

Storage

Storage:

Store at -20°C. Stable for one year after shipment.

Storage Buffer:

PBS with 0.02% sodium azide and 50% glycerol pH 7.3.

Aliquoting is unnecessary for -20°C storage

For technical support and original validation data for this product please contact:

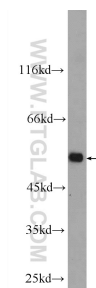
T: 4006900926

E: Proteintech-CN@ptglab.com

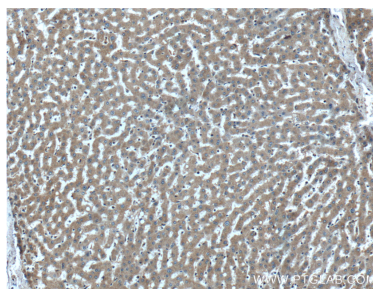
W: ptgcn.com

This product is exclusively available under Proteintech Group brand and is not available to purchase from any other manufacturer.

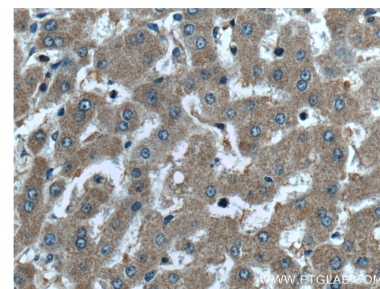
Selected Validation Data



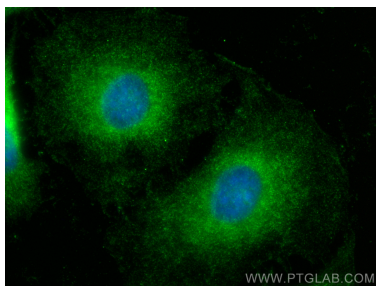
mouse liver tissue were subjected to SDS PAGE followed by western blot with 25382-1-AP (PROC Antibody) at dilution of 1:1000 incubated at room temperature for 1.5 hours.



Immunohistochemical analysis of paraffin-embedded human liver tissue slide using 25382-1-AP (PROC Antibody) at dilution of 1:200 (under 10x lens).



Immunohistochemical analysis of paraffin-embedded human liver tissue slide using 25382-1-AP (PROC Antibody) at dilution of 1:200 (under 40x lens).



Immunofluorescent analysis of (-20°C Ethanol) fixed HeLa cells using PROC antibody (25382-1-AP) at dilution of 1:200 and Multi-rAb CoraLite® Plus 488-Goat Anti-Rabbit Recombinant Secondary Antibody (H+L) (RGAR002).