

For Research Use Only

TMEM182 Polyclonal antibody

Catalog Number: 25366-1-AP

1 Publications



Basic Information

Catalog Number:

25366-1-AP

Concentration:

800 ug/ml

Source:

Rabbit

Isotype:

IgG

Immunogen Catalog Number:

AG21906

GenBank Accession Number:

BC130308

GeneID (NCBI):

130827

UNIPROT ID:

Q6ZP80

Full Name:

transmembrane protein 182

Calculated MW:

229 aa, 26 kDa

Observed MW:

15 kDa 26 kDa

Purification Method:

Antigen affinity purification

Recommended Dilutions:

WB 1:200-1:1000

IHC 1:20-1:200

Applications

Tested Applications:

WB, IHC, ELISA

Cited Applications:

WB

Species Specificity:

human, mouse

Cited Species:

mouse

Note-IHC: suggested antigen retrieval with TE buffer pH 9.0; (*) Alternatively, antigen retrieval may be performed with citrate buffer pH 6.0

Positive Controls:

WB : mouse skeletal muscle tissue,

IHC : human liver cancer tissue,

Background Information

TMEM182 may function in upon brown preadipocyte to adipocyte conversion. TMEM182 has some isoforms with MW 12-15 kDa and 26 kDa.

Notable Publications

Author	Pubmed ID	Journal	Application
Hirofumi Morihara	39512841	FASEB Bioadv	WB

Storage

Storage:

Store at -20°C. Stable for one year after shipment.

Storage Buffer:

PBS with 0.02% sodium azide and 50% glycerol

Aliquoting is unnecessary for -20°C storage

For technical support and original validation data for this product please contact:

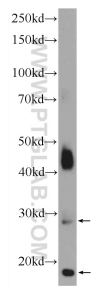
T: 4006900926

E: Proteintech-CN@ptglab.com

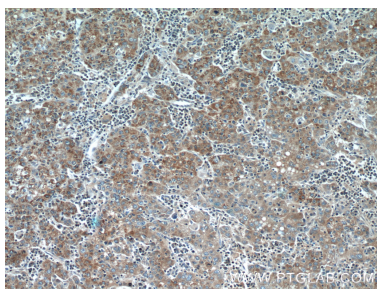
W: ptgcn.com

This product is exclusively available under Proteintech Group brand and is not available to purchase from any other manufacturer.

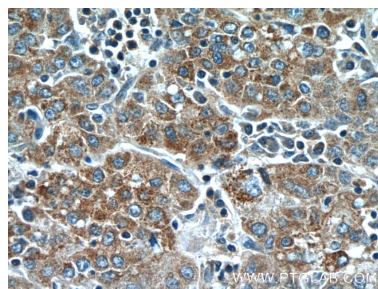
Selected Validation Data



mouse skeletal muscle tissue were subjected to SDS PAGE followed by western blot with 25366-1-AP (TMEM182 Antibody) at dilution of 1:300 incubated at room temperature for 1.5 hours.



Immunohistochemical analysis of paraffin-embedded human liver cancer tissue slide using 25366-1-AP (TMEM182 Antibody) at dilution of 1:50 (under 10x lens).



Immunohistochemical analysis of paraffin-embedded human liver cancer tissue slide using 25366-1-AP (TMEM182 Antibody) at dilution of 1:50 (under 40x lens).