

For Research Use Only

ZFYVE28 Polyclonal antibody

Catalog Number: 25360-1-AP



Basic Information

Catalog Number:

25360-1-AP

Size:

850 ug/ml

Source:

Rabbit

Isotype:

IgG

Immunogen Catalog Number:

AG19796

GenBank Accession Number:

BC137309

GeneID (NCBI):

57732

UNIPROT ID:

Q9HCC9

Full Name:

zinc finger, FYVE domain containing 28

Calculated MW:

887 aa, 96 kDa

Observed MW:

96 kDa

Purification Method:

Antigen affinity purification

Recommended Dilutions:

WB 1:500-1:3000

IF/ICC 1:50-1:500

Applications

Tested Applications:

WB, IF/ICC, ELISA

Species Specificity:

human

Positive Controls:

WB : MCF-7 cells,

IF/ICC : HepG2 cells, HeLa cells

Background Information

ZFYVE28, also known as LST2, belongs to the Lst-2 family. ZFYVE28 is a FYVE domain protein that has been shown to be a regulator of the epidermal growth factor receptor (EGFR) pathway. The non-ubiquitinated form of ZFYVE28 co-localizes with EGFR in endosomes and promotes receptor degradation (PMID: 29549365). ZFYVE28 has 8 isoforms with the molecular mass of 19-33, 83-93, and 96 kDa.

Storage

Storage:

Store at -20°C. Stable for one year after shipment.

Storage Buffer:

PBS with 0.02% sodium azide and 50% glycerol pH 7.3.

Aliquoting is unnecessary for -20°C storage

For technical support and original validation data for this product please contact:

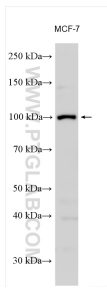
T: 4006900926

E: Proteintech-CN@ptglab.com

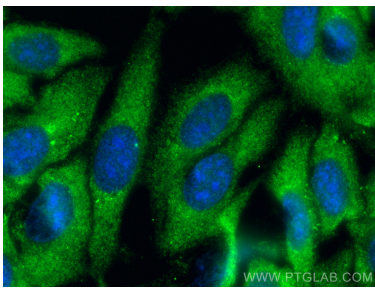
W: ptgcn.com

This product is exclusively available under Proteintech Group brand and is not available to purchase from any other manufacturer.

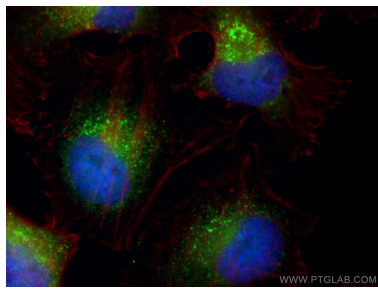
Selected Validation Data



MCF-7 cells were subjected to SDS PAGE followed by western blot with 25360-1-AP (ZFYVE28 antibody) at dilution of 1:1500 incubated at room temperature for 1.5 hours.



Immunofluorescent analysis of (-20°C Ethanol) fixed HepG2 cells using ZFYVE28 antibody (25360-1-AP) at dilution of 1:200 and CoraLite®488-Conjugated AffiniPure Goat Anti-Rabbit IgG(H+L).



Immunofluorescent analysis of (4% PFA) fixed HeLa cells using ZFYVE28 antibody (25360-1-AP) at dilution of 1:400 and CoraLite®488-Conjugated AffiniPure Goat Anti-Rabbit IgG(H+L) (SA00013-2), CL594-phalloidin (red).