

TNRC4 Polyclonal antibody

Catalog Number: 25353-1-AP

Basic Information

Catalog Number: 25353-1-AP	GenBank Accession Number: BC052491	Purification Method: Antigen affinity purification
Size: 550 µg/ml	GeneID (NCBI): 11189	Recommended Dilutions: WB 1:500-1:2000 IHC 1:20-1:200
Source: Rabbit	UNIPROT ID: Q5SZQ8	
Isotype: IgG	Full Name: trinucleotide repeat containing 4	
Immunogen Catalog Number: AG18601	Calculated MW: 464 aa, 51 kDa Observed MW: 55 kDa	

Applications

Tested Applications: IHC, WB, ELISA	Positive Controls:
Species Specificity: human, mouse	WB : mouse lung tissue, mouse spleen tissue IHC : human testis tissue, human cerebellum tissue
Note-IHC: suggested antigen retrieval with TE buffer pH 9.0; (*) Alternatively, antigen retrieval may be performed with citrate buffer pH 6.0	

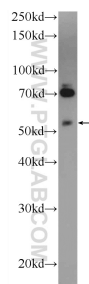
Background Information

TNRC4, also named as BRUNOL1, CAGH4, ERDA4, or TNRC4, is a 465 amino acid protein, which contains three RRM (RNA recognition motif) domains and belongs to the CELF/BRUNOL family. TNRC4 localizes in the nucleus and is expressed in brain. TNRC4 as a RNA-binding protein is involved in the regulation of pre-mRNA alternative splicing and mediates exon inclusion and/or exclusion in pre-mRNA that are subject to tissue-specific and developmentally regulated alternative splicing.

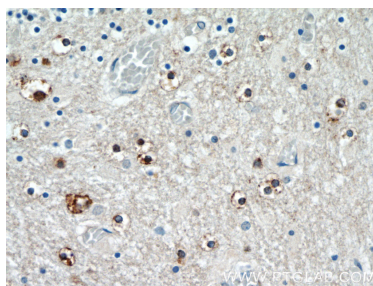
Storage

Storage:
Store at -20°C. Stable for one year after shipment.
Storage Buffer:
PBS with 0.02% sodium azide and 50% glycerol pH 7.3.
Aliquoting is unnecessary for -20°C storage

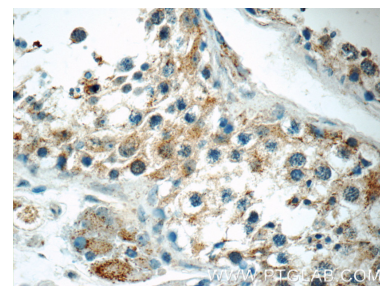
Selected Validation Data



mouse lung tissue were subjected to SDS PAGE followed by western blot with 25353-1-AP (TNRC4 Antibody) at dilution of 1:1000 incubated at room temperature for 1.5 hours.



Immunohistochemical analysis of paraffin-embedded human cerebellum tissue slide using 25353-1-AP (TNRC4 Antibody) at dilution of 1:50 (under 40x lens).



Immunohistochemical analysis of paraffin-embedded human testis tissue slide using 25353-1-AP (TNRC4 Antibody) at dilution of 1:50 (under 40x lens).