

RSPO1 Polyclonal antibody

Catalog Number: 25348-1-AP

5 Publications

Basic Information

Catalog Number:

25348-1-AP

Size:

900 µg/ml

Source:

Rabbit

Isotype:

IgG

Immunogen Catalog Number:

AG21858

GenBank Accession Number:

BC114966

GeneID (NCBI):

284654

UNIPROT ID:

Q2MKA7

Full Name:

R-spondin homolog (Xenopus laevis)

Calculated MW:

263 aa, 29 kDa

Observed MW:

29 kDa

Purification Method:

Antigen affinity purification

Recommended Dilutions:

WB 1:1000-1:6000

IHC 1:500-1:2000

Applications

Tested Applications:

IHC, WB, ELISA

Cited Applications:

WB, IF

Species Specificity:

human, rat

Cited Species:

human, mouse

Note-IHC: suggested antigen retrieval with TE buffer pH 9.0; (*) Alternatively, antigen retrieval may be performed with citrate buffer pH 6.0

Positive Controls:

WB : human plasma, rat plasma

IHC : human kidney tissue,

Background Information

RSPO1, also named R-spondin-1, Activator of the canonical Wnt signaling pathway by acting as a ligand for LGR4-6 receptors. Acts as a ligand for frizzled FZD8 and LRP6. May negatively regulate the TGF-beta pathway. Has a essential role in ovary determination. Regulates Wnt signaling by antagonizing DKK1/KREM1-mediated internalization of LRP6 through an interaction with KREM1. RSPO1 seems to mainly localize to nucleoli (PMID:17804805).

Notable Publications

Author	Pubmed ID	Journal	Application
Almudena Chaves-Pérez	36098959	J Exp Med	WB,IF
Bhupesh Singla	32750106	Cardiovasc Res	WB
Chiung-Fang Chang	27314333	Int J Mol Sci	WB

Storage

Storage:

Store at -20°C. Stable for one year after shipment.

Storage Buffer:

PBS with 0.02% sodium azide and 50% glycerol pH 7.3.

Aliquoting is unnecessary for -20°C storage

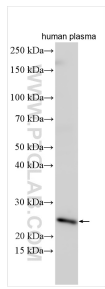
For technical support and original validation data for this product please contact:

T: 4006900926

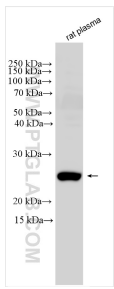
E: Proteintech-CN@ptglab.comW: ptgcn.com

This product is exclusively available under Proteintech Group brand and is not available to purchase from any other manufacturer.

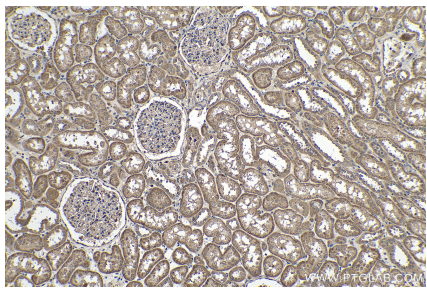
Selected Validation Data



human plasma were subjected to SDS PAGE followed by western blot with 25348-1-AP (RSPO1 antibody) at dilution of 1:3000 incubated at room temperature for 1.5 hours.



rat plasma were subjected to SDS PAGE followed by western blot with 25348-1-AP (RSPO1 antibody) at dilution of 1:1000 incubated at room temperature for 1.5 hours.



Immunohistochemical analysis of paraffin-embedded human kidney tissue slide using 25348-1-AP (RSPO1 antibody) at dilution of 1:1000 (under 10x lens). Heat mediated antigen retrieval with Tris-EDTA buffer (pH 9.0).