

For Research Use Only

ZNF460 Polyclonal antibody

Catalog Number: 25299-1-AP

Featured Product

4 Publications



Basic Information

Catalog Number:

25299-1-AP

Size:

650 ug/ml

Source:

Rabbit

Isotype:

IgG

Immunogen Catalog Number:

AG18106

GenBank Accession Number:

BC118625

GeneID (NCBI):

10794

UNIPROT ID:

Q14592

Full Name:

zinc finger protein 460

Calculated MW:

562 aa, 64 kDa

Observed MW:

65 kDa

Purification Method:

Antigen affinity purification

Recommended Dilutions:

WB 1:1000-1:4000

IF/ICC 1:200-1:800

Applications

Tested Applications:

WB, IF/ICC, ELISA

Cited Applications:

WB, IHC, ChIP

Species Specificity:

human, mouse

Cited Species:

human

Positive Controls:

WB : A431 cells, HeLa cells, Jurkat cells, HepG2 cells

IF/ICC : HeLa cells,

Background Information

Notable Publications

Author	Pubmed ID	Journal	Application
Tengfei Hao	33976729	J Cancer	WB, IHC
Miao-Qing Zhang	38842055	Autophagy	WB
Chuanpeng Zhang	38355583	Mol Cancer	WB, ChIP

Storage

Storage:

Store at -20°C. Stable for one year after shipment.

Storage Buffer:

PBS with 0.02% sodium azide and 50% glycerol pH 7.3.

Aliquoting is unnecessary for -20°C storage

For technical support and original validation data for this product please contact:

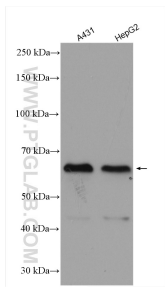
T: 4006900926

E: Proteintech-CN@ptglab.com

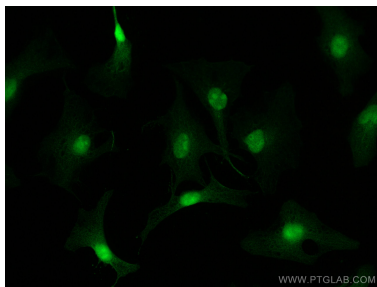
W: ptgcn.com

This product is exclusively available under Proteintech Group brand and is not available to purchase from any other manufacturer.

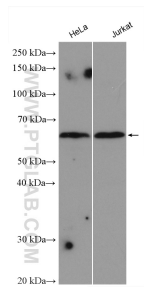
Selected Validation Data



A431 cells were subjected to SDS PAGE followed by western blot with 25299-1-AP (ZNF460 antibody) at dilution of 1:2000 incubated at room temperature for 1.5 hours.



Immunofluorescent analysis of (4% PFA) fixed HeLa cells using ZNF460 antibody (25299-1-AP) at dilution of 1:400 and CoraLite®488-Conjugated AffiniPure Goat Anti-Rabbit IgG(H+L).



HeLa cells were subjected to SDS PAGE followed by western blot with 25299-1-AP (ZNF460 antibody) at dilution of 1:3000 incubated at room temperature for 1.5 hours.