

For Research Use Only

Claudin 23 Polyclonal antibody

Catalog Number: 25296-1-AP

2 Publications



Basic Information

Catalog Number:

25296-1-AP

Size:

500 µg/ml

Source:

Rabbit

Isotype:

IgG

Immunogen Catalog Number:

AG18189

GenBank Accession Number:

BC125148

GeneID (NCBI):

137075

UNIPROT ID:

Q96B33

Full Name:

claudin 23

Calculated MW:

292 aa, 32 kDa

Observed MW:

32 kDa

Purification Method:

Antigen affinity purification

Recommended Dilutions:

WB 1:500-1:1000

IHC 1:20-1:200

Applications

Tested Applications:

WB, IHC, ELISA

Cited Applications:

WB, IF

Species Specificity:

human

Cited Species:

human, canine

Note-IHC: suggested antigen retrieval with TE buffer pH 9.0; (*) Alternatively, antigen retrieval may be performed with citrate buffer pH 6.0

Positive Controls:

WB : COLO 320 cells,

IHC : human colon cancer tissue,

Background Information

Claudin 23 (CLDN23) belongs to the large claudin family of proteins, which are tetraspan transmembrane proteins of tight junctions (PMID: 12736707; 18036336). Claudins exhibit specific patterns of expression in different tissues. Human CLDN23 mRNA was expressed in germinal center B cells, placenta, stomach as well as in colon tumor (PMID: 12736707). CLDN23 has been reported as a candidate tumor suppressor gene implicated in intestinal-type gastric cancer (PMID: 12736707).

Notable Publications

Author	Pubmed ID	Journal	Application
Bei Liu	39579764	Cell	WB
Wenxi Xu	37467886	Life Sci	WB,IF

Storage

Storage:

Store at -20°C. Stable for one year after shipment.

Storage Buffer:

PBS with 0.02% sodium azide and 50% glycerol pH 7.3.

Aliquoting is unnecessary for -20°C storage

For technical support and original validation data for this product please contact:

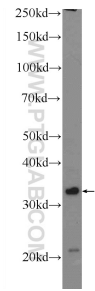
T: 4006900926

E: Proteintech-CN@ptglab.com

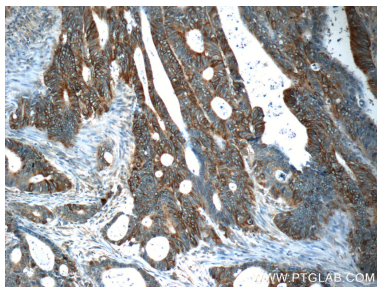
W: ptgcn.com

This product is exclusively available under Proteintech Group brand and is not available to purchase from any other manufacturer.

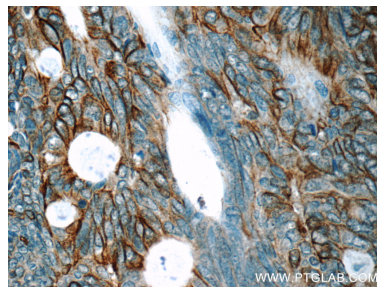
Selected Validation Data



COLO 320 cells were subjected to SDS PAGE followed by western blot with 25296-1-AP (Claudin 23 antibody at dilution of 1:600 incubated at room temperature for 1.5 hours.



Immunohistochemical analysis of paraffin-embedded human colon cancer tissue slide using 25296-1-AP (Claudin 23 antibody at dilution of 1:50 (under 10x lens).



Immunohistochemical analysis of paraffin-embedded human colon cancer tissue slide using 25296-1-AP (Claudin 23 antibody at dilution of 1:50 (under 40x lens).