

For Research Use Only

CWC15 Polyclonal antibody

Catalog Number: 25293-1-AP

1 Publications



Basic Information

Catalog Number:

25293-1-AP

Size:

600 ug/ml

Source:

Rabbit

Isotype:

IgG

Immunogen Catalog Number:

AG18116

GenBank Accession Number:

BC040946

GeneID (NCBI):

51503

UNIPROT ID:

Q9P013

Full Name:

CWC15 spliceosome-associated protein homolog (S. cerevisiae)

Calculated MW:

229 aa, 27 kDa

Observed MW:

27-35 kDa

Purification Method:

Antigen affinity purification

Recommended Dilutions:

WB 1:500-1:1000

IP 0.5-4.0 ug for 1.0-3.0 mg of total protein lysate

IHC 1:50-1:500

IF/ICC 1:50-1:500

Applications

Tested Applications:

WB, IHC, IF/ICC, IP, ELISA

Cited Applications:

WB

Species Specificity:

human, mouse

Note-IHC: suggested antigen retrieval with TE buffer pH 9.0; (*) Alternatively, antigen retrieval may be performed with citrate buffer pH 6.0

Positive Controls:

WB: mouse liver tissue, HeLa cells, HepG2 cells, Jurkat cells, mouse heart tissue, mouse testis tissue, PC-3 cells, SW 1990 cells

IP: HeLa cells,

IHC: human stomach tissue, human breast cancer tissue

IF/ICC: HeLa cells,

Background Information

CWC15, also named as C11orf5 or Spliceosome-associated protein CWC15 homolog, is a 229 amino acid protein, which belongs to the CWC15 family. CWC15 as a Component of the PRP19-CDC5L complex that forms an integral part of the spliceosome and is required for activating pre-mRNA splicing.

Notable Publications

Author	Pubmed ID	Journal	Application
Febe van Maldegem	26130721	Nucleic Acids Res	WB

Storage

Storage:

Store at -20°C. Stable for one year after shipment.

Storage Buffer:

PBS with 0.02% sodium azide and 50% glycerol pH 7.3.

Aliquoting is unnecessary for -20°C storage

For technical support and original validation data for this product please contact:

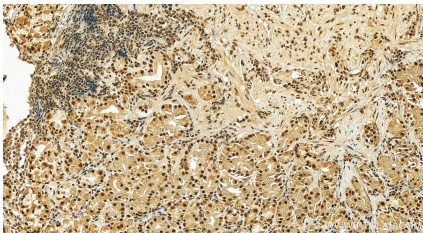
T: 4006900926

E: Proteintech-CN@ptglab.com

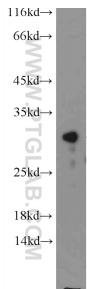
W: ptgcn.com

This product is exclusively available under Proteintech Group brand and is not available to purchase from any other manufacturer.

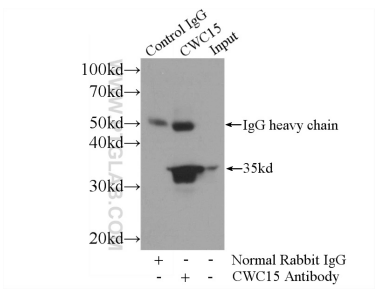
Selected Validation Data



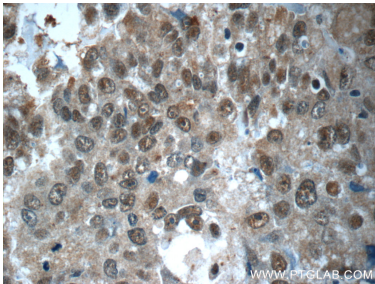
Immunohistochemical analysis of paraffin-embedded human normal stomach slide using 25293-1-AP (CWC15 antibody) at dilution of 1:200 (under 20x lens). Heat mediated antigen retrieval with Tris-EDTA buffer (pH 9.0).



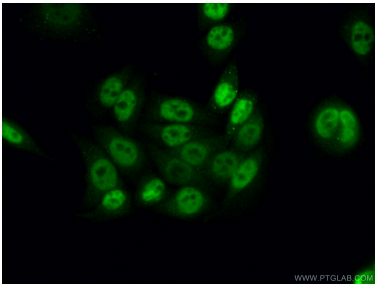
mouse liver tissue were subjected to SDS PAGE followed by western blot with 25293-1-AP (CWC15 Antibody) at dilution of 1:600 incubated at room temperature for 1.5 hours.



IP result of anti-CWC15 (IP:25293-1-AP, 3ug; Detection:25293-1-AP 1:600) with HeLa cells lysate 2800ug.



Immunohistochemical analysis of paraffin-embedded human breast cancer tissue slide using 25293-1-AP (CWC15 Antibody) at dilution of 1:50 (under 40x lens).



Immunofluorescent analysis of (4% PFA) fixed HeLa cells using 25293-1-AP (CWC15 antibody) at dilution of 1:50 and Alexa Fluor 488-conjugated AffiniPure Goat Anti-Rabbit IgG(H+L).