

For Research Use Only

AFM Polyclonal antibody

Catalog Number: 25280-1-AP

1 Publications



Basic Information

Catalog Number:

25280-1-AP

Size:

650 µg/ml

Source:

Rabbit

Isotype:

IgG

Immunogen Catalog Number:

AG16866

GenBank Accession Number:

BC109020

GeneID (NCBI):

173

UNIPROT ID:

P43652

Full Name:

afamin

Calculated MW:

599 aa, 69 kDa

Observed MW:

70-85 kDa

Purification Method:

Antigen affinity purification

Recommended Dilutions:

WB 1:1000-1:4000

IP 0.5-4.0 µg for 1.0-3.0 mg of total protein lysate

Applications

Tested Applications:

WB, IP, ELISA

Cited Applications:

WB

Species Specificity:

human

Cited Species:

rat

Positive Controls:

WB : human blood tissue,

IP : human plasma tissue,

Background Information

AFM (Afinin) is a member of the albumin superfamily, which comprises albumin, vitamin D-binding protein, α-fetoprotein, and afamin. AFM is present in the plasma/serum, cerebrospinal fluid, and follicular fluid, and functions as a vitamin E-binding protein. Alterations of expression level of AFM have been linked to variety of diseases like cancer.

Notable Publications

Author	Pubmed ID	Journal	Application
Qi Jiang	39326894	Biomed Chromatogr	WB

Storage

Storage:

Store at -20°C. Stable for one year after shipment.

Storage Buffer:

PBS with 0.02% sodium azide and 50% glycerol pH 7.3.

Aliquoting is unnecessary for -20°C storage

For technical support and original validation data for this product please contact:

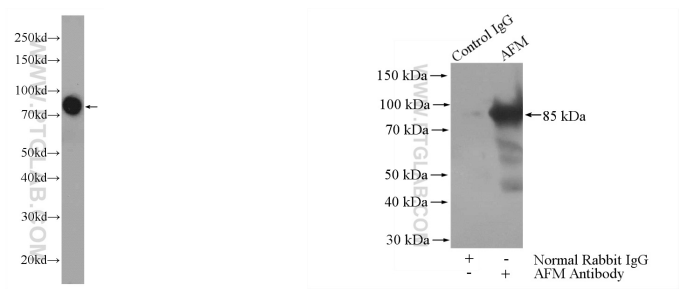
T: 4006900926

E: Proteintech-CN@ptglab.com

W: ptgcn.com

This product is exclusively available under Proteintech Group brand and is not available to purchase from any other manufacturer.

Selected Validation Data



human blood were subjected to SDS PAGE followed by western blot with 25280-1-AP (AFM Antibody) at dilution of 1:2000 incubated at room temperature for 1.5 hours.

IP result of anti-AFM (IP:25280-1-AP, 4ug; Detection:25280-1-AP 1:2000) with human plasma lysate 4000ug.