

# Nesprin 2 Polyclonal antibody

Catalog Number: 25265-1-AP

1 Publications

## Basic Information

**Catalog Number:**

25265-1-AP

**Size:**

650 µg/ml

**Source:**

Rabbit

**Isotype:**

IgG

**GenBank Accession Number:**

NM\_015180

**GeneID (NCBI):**

23224

**UNIPROT ID:**

Q8WXH0

**Full Name:**

spectrin repeat containing, nuclear envelope 2

**Calculated MW:**

799 kDa

**Observed MW:**

50-60 kDa

**Purification Method:**

Antigen affinity purification

**Recommended Dilutions:**

WB 1:500-1:1000

## Applications

**Tested Applications:**

WB, ELISA, IF

**Cited Applications:**

WB

**Species Specificity:**

human, mouse, rat

**Cited Species:**

human

**Positive Controls:**

WB : HEK-293 cells,

## Background Information

Nesprin-2 is a member of actin-binding proteins that localize to the outer nuclear membrane. As a nuclear envelope component it provides a link between cytoskeletal components of the cytoplasm and the nucleoplasm. Nesprin genes generate, through alternative splicing and alternative promoter and/or terminator usage, a multitude of differentially expressed isoforms, differing in domain architecture and length. The largest protein isoform, known as NUANCE or GIANT, has a predicted MW around 796 kDa. Other isoforms range from 30 kDa to 119 kDa.

## Notable Publications

Author	Pubmed ID	Journal	Application
Bei-Bei Sun	38697461	Cancer Lett	WB

## Storage

**Storage:**

Store at -20°C. Stable for one year after shipment.

**Storage Buffer:**

PBS with 0.02% sodium azide and 50% glycerol pH 7.3.

Aliquoting is unnecessary for -20°C storage

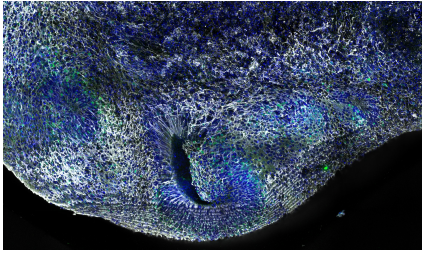
For technical support and original validation data for this product please contact:

T: 4006900926

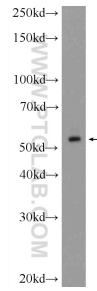
E: [Proteintech-CN@ptglab.com](mailto:Proteintech-CN@ptglab.com)W: [ptgcn.com](http://ptgcn.com)

This product is exclusively available under Proteintech Group brand and is not available to purchase from any other manufacturer.

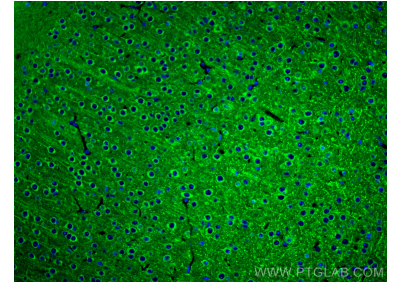
## Selected Validation Data



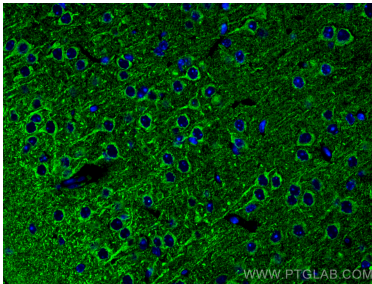
Human dorsal cerebral organoid at 12 weeks. 4% PFA fixed. Antibody dilution was 1:500 for Syne-2 (25265-1-AP; white), DAPI 1:1000. Image created by Wimmer Ryszard from the Institut Curie in Paris, France



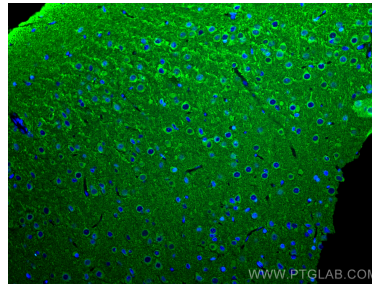
HEK-293 cells were subjected to SDS PAGE followed by western blot with 25265-1-AP (SYNE2 Antibody) at dilution of 1:600 incubated at room temperature for 1.5 hours.



Immunofluorescent analysis of (4% PFA) fixed mouse brain tissue using Nesprin 2 antibody (25265-1-AP) at dilution of 1:200 and CoraLite®488-Conjugated AffiniPure Goat Anti-Rabbit IgG(H+L).



Immunofluorescent analysis of (4% PFA) fixed mouse brain tissue using Nesprin 2 antibody (25265-1-AP) at dilution of 1:200 and CoraLite®488-Conjugated AffiniPure Goat Anti-Rabbit IgG(H+L).



Immunofluorescent analysis of (4% PFA) fixed rat brain tissue using Nesprin 2 antibody (25265-1-AP) at dilution of 1:200 and CoraLite®488-Conjugated AffiniPure Goat Anti-Rabbit IgG(H+L).