

For Research Use Only

COMMD8 Polyclonal antibody, PBS Only

Catalog Number: 25237-1-PBS



Basic Information

Catalog Number: 25237-1-PBS	GenBank Accession Number: BC008371	Purification Method: Antigen affinity purification
Concentration: 1 mg/ml	GeneID (NCBI): 54951	
Source: Rabbit	UNIPROT ID: Q9NX08	
Isotype: IgG	Full Name: COMM domain containing 8	
Immunogen Catalog Number: AG18712	Calculated MW: 183 aa, 21 kDa	
	Observed MW: 21 kDa	

Applications

Tested Applications:
WB, IHC, IF/ICC, Indirect ELISA

Species Specificity:
human

Background Information

Storage

Storage:
Store at -80°C.
The product is shipped with ice packs. Upon receipt, store it immediately at -80°C

Storage Buffer:
PBS only, pH7.3

For technical support and original validation data for this product please contact:

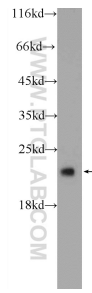
T: 4006900926

E: Proteintech-CN@ptglab.com

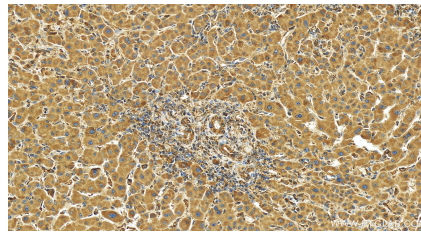
W: ptgcn.com

This product is exclusively available under Proteintech Group brand and is not available to purchase from any other manufacturer.

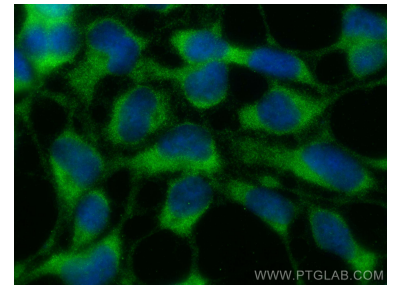
Selected Validation Data



HEK-293 cells were subjected to SDS PAGE followed by western blot with 25237-1-AP (COMMD8 Antibody) at dilution of 1:600 incubated at room temperature for 1.5 hours. This data was developed using the same antibody clone with 25237-1-PBS in a different storage buffer formulation.



Immunohistochemical analysis of paraffin-embedded human intrahepatic cholangiocarcinoma tissue slide using 25237-1-AP (COMMD8 antibody) at dilution of 1:100 (under 20x lens). Heat mediated antigen retrieval with Tris-EDTA buffer (pH 9.0). This data was developed using the same antibody clone with 25237-1-PBS in a different storage buffer formulation.



Immunofluorescent analysis of (-20°C Ethanol) fixed HEK-293 cells using COMMD8 antibody (25237-1-AP) at dilution of 1:200 and Multi-rAb CoraLite® Plus 488-Goat Anti-Rabbit Recombinant Secondary Antibody (H+L) (RGAR002). This data was developed using the same antibody clone with 25237-1-PBS in a different storage buffer formulation.