

For Research Use Only

KLHL28 Polyclonal antibody, PBS Only

Catalog Number: 25224-1-PBS



Basic Information

Catalog Number:

25224-1-PBS

Source:

Rabbit

Isotype:

IgG

Immunogen Catalog Number:

AG18665

GenBank Accession Number:

BC121009

GeneID (NCBI):

54813

UNIPROT ID:

Q9NXS3

Full Name:

kelch-like 28 (Drosophila)

Calculated MW:

571 aa, 64 kDa

Observed MW:

64 kDa

Purification Method:

Antigen affinity purification

Applications

Tested Applications:

WB, IHC, Indirect ELISA

Species Specificity:

human, mouse

Background Information

KLHL28 also named as BTBD5 or Kelch like protein 28 is a 571 amino acid protein, which contains one BTB domain and six kelch repeats. KLHL28 localizes in the cytoplasm and belongs to BTB/kelch-associated proteins family. KLHL28 may play a role in organizing the actin cytoskeleton of the brain cells. KLHL28 is expressed as two isoforms produced by alternative splicing.

Storage

Storage:

Store at -80°C.

The product is shipped with ice packs. Upon receipt, store it immediately at -80°C

Storage Buffer:

PBS only, pH7.3

For technical support and original validation data for this product please contact:

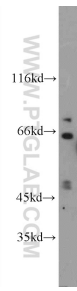
T: 4006900926

E: Proteintech-CN@ptglab.com

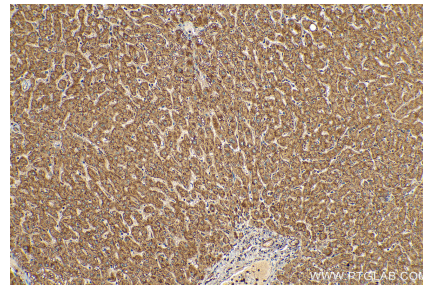
W: ptgcn.com

This product is exclusively available under Proteintech Group brand and is not available to purchase from any other manufacturer.

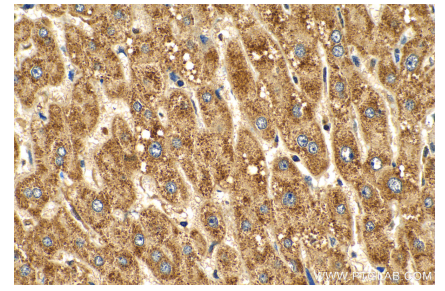
Selected Validation Data



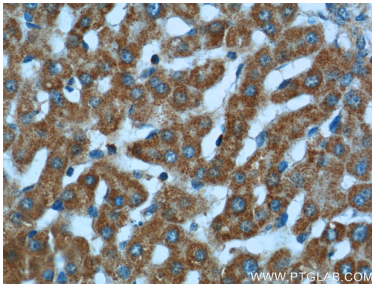
Jurkat cells were subjected to SDS PAGE followed by western blot with 25224-1-AP (KLHL28 Antibody) at dilution of 1:300 incubated at room temperature for 1.5 hours. This data was developed using the same antibody clone with 25224-1-PBS in a different storage buffer formulation.



Immunohistochemical analysis of paraffin-embedded human liver tissue slide using 25224-1-AP (KLHL28 antibody) at dilution of 1:200 (under 10x lens). Heat mediated antigen retrieval with Tris-EDTA buffer (pH 9.0). This data was developed using the same antibody clone with 25224-1-PBS in a different storage buffer formulation.



Immunohistochemical analysis of paraffin-embedded human liver tissue slide using 25224-1-AP (KLHL28 antibody) at dilution of 1:200 (under 40x lens). Heat mediated antigen retrieval with Tris-EDTA buffer (pH 9.0). This data was developed using the same antibody clone with 25224-1-PBS in a different storage buffer formulation.



Immunohistochemical analysis of paraffin-embedded human liver tissue slide using 25224-1-AP (KLHL28 Antibody) at dilution of 1:50 (under 40x lens). This data was developed using the same antibody clone with 25224-1-PBS in a different storage buffer formulation.