

For Research Use Only

SLMAP Polyclonal antibody

Catalog Number: 25220-1-AP

Featured Product

1 Publications



Basic Information

Catalog Number:

25220-1-AP

Size:

700 µg/ml

Source:

Rabbit

Isotype:

IgG

Immunogen Catalog Number:

AG18162

GenBank Accession Number:

BC115701

GeneID (NCBI):

7871

UNIPROT ID:

Q14BN4

Full Name:

sarcolemma associated protein

Calculated MW:

828 aa, 95 kDa

Observed MW:

35 kDa, 45 kDa, 63-66 kDa, 83-91 kDa

Purification Method:

Antigen affinity purification

Recommended Dilutions:

WB 1:500-1:1000

Applications

Tested Applications:

WB, ELISA

Cited Applications:

WB

Species Specificity:

human, mouse

Cited Species:

human

Positive Controls:

WB : mouse heart tissue, A431 cells, mouse skeletal muscle tissue

Background Information

Sarcolemmal membrane associated protein (SLMAP) is a tail-anchored membrane protein involved in the docking and membrane fusion process via protein-protein interactions. Deregulation of SLMAP expression plays an important role in type 2 diabetes, and changes in SLMAP expression are linked to hyperglycemia and diabetes. SLMAPs are components of cardiac membranes and have been identified as a novel regulator of cardiac function. There are several isoforms of SLMAPs with varying molecular size (35, 45, 63, and 83-91 kDa) as a result of alternative splicing. The short 35-kDa isoform is predominantly expressed in cardiac and slow-twitch skeletal muscle, while the 83- to 91-kDa isoform is ubiquitous. This antibody recognizes all of these isoforms in mouse heart lysate. (21785580, 22180652)

Notable Publications

Author	Pubmed ID	Journal	Application
Masayoshi Hasegawa	35916358	Thorac Cancer	WB

Storage

Storage:

Store at -20°C. Stable for one year after shipment.

Storage Buffer:

PBS with 0.02% sodium azide and 50% glycerol pH 7.3.

Aliquoting is unnecessary for -20°C storage

For technical support and original validation data for this product please contact:

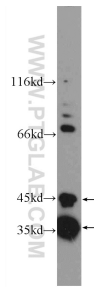
T: 4006900926

E: Proteintech-CN@ptglab.com

W: ptgcn.com

This product is exclusively available under Proteintech Group brand and is not available to purchase from any other manufacturer.

Selected Validation Data



mouse heart tissue were subjected to SDS PAGE followed by western blot with 25220-1-AP (SLMAP Antibody) at dilution of 1:600 incubated at room temperature for 1.5 hours.