

For Research Use Only

WIPI1 Polyclonal antibody

Catalog Number: 25204-1-AP

Featured Product

1 Publications



Basic Information

Catalog Number:

25204-1-AP

Size:

900 µg/ml

Source:

Rabbit

Isotype:

IgG

Immunogen Catalog Number:

AG18461

GenBank Accession Number:

BC039867

GeneID (NCBI):

55062

UNIPROT ID:

Q5MNZ9

Full Name:

WD repeat domain, phosphoinositide interacting 1

Calculated MW:

446 aa, 49 kDa

Observed MW:

49 kDa

Purification Method:

Antigen affinity purification

Recommended Dilutions:

WB 1:500-1:2000

Applications

Tested Applications:

WB, ELISA

Cited Applications:

WB, IP

Species Specificity:

human, mouse

Cited Species:

human

Positive Controls:

WB : SW 1990 cells, HEK-293 cells, NIH/3T3 cells

Background Information

Notable Publications

Author	Pubmed ID	Journal	Application
Yin Zhao	34689010	Oral Oncol	WB,IP

Storage

Storage:

Store at -20°C. Stable for one year after shipment.

Storage Buffer:

PBS with 0.02% sodium azide and 50% glycerol pH 7.3.

Aliquoting is unnecessary for -20°C storage

For technical support and original validation data for this product please contact:

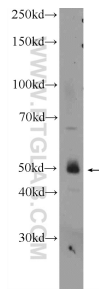
T: 4006900926

E: Proteintech-CN@ptglab.com

W: ptgcn.com

This product is exclusively available under Proteintech Group brand and is not available to purchase from any other manufacturer.

Selected Validation Data



SW 1990 cells were subjected to SDS PAGE followed by western blot with 25204-1-AP (WIPI1 Antibody) at dilution of 1:1000 incubated at room temperature for 1.5 hours.