

For Research Use Only

# GBF1 Polyclonal antibody

Catalog Number: 25183-1-AP

Featured Product

4 Publications



## Basic Information

Catalog Number:

25183-1-AP

Size:

600 µg/ml

Source:

Rabbit

Isotype:

IgG

Immunogen Catalog Number:

AG16579

GenBank Accession Number:

BC117681

GeneID (NCBI):

8729

UNIPROT ID:

Q92538

Full Name:

golgi-specific brefeldin A resistant  
guanine nucleotide exchange factor 1

Calculated MW:

1859 aa, 206 kDa

Observed MW:

206 kDa

Purification Method:

Antigen affinity purification

Recommended Dilutions:

WB 1:500-1:1000

IHC 1:50-1:500

IF/ICC 1:10-1:100

## Applications

Tested Applications:

WB, IHC, IF/ICC, ELISA

Cited Applications:

WB, IF

Species Specificity:

human

Cited Species:

human

**Note-IHC: suggested antigen retrieval with  
TE buffer pH 9.0; (\*) Alternatively, antigen  
retrieval may be performed with citrate  
buffer pH 6.0**

Positive Controls:

WB : HeLa cells,

IHC : human prostate cancer tissue,

IF/ICC : HeLa cells,

## Background Information

### Notable Publications

Author	Pubmed ID	Journal	Application
Tao Wang	28985237	PLoS Pathog	WB
Xiaobo Lei	28303920	Sci Rep	WB
Junki Hirano	38904364	J Virol	IF

## Storage

Storage:

Store at -20°C. Stable for one year after shipment.

Storage Buffer:

PBS with 0.02% sodium azide and 50% glycerol pH 7.3.

Aliquoting is unnecessary for -20°C storage

For technical support and original validation data for this product please contact:

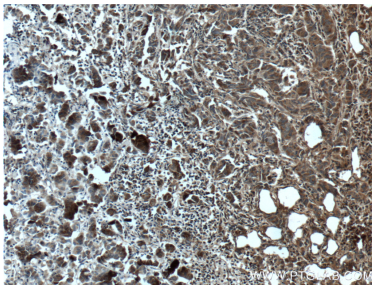
T: 4006900926

E: [Proteintech-CN@ptglab.com](mailto:Proteintech-CN@ptglab.com)

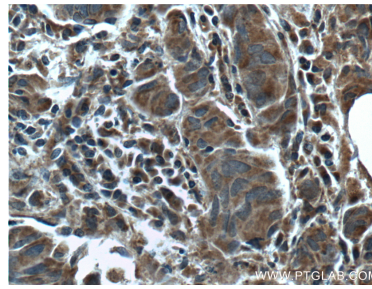
W: [ptgcn.com](http://ptgcn.com)

**This product is exclusively available under Proteintech Group brand and is not available to purchase from any other manufacturer.**

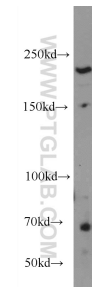
## Selected Validation Data



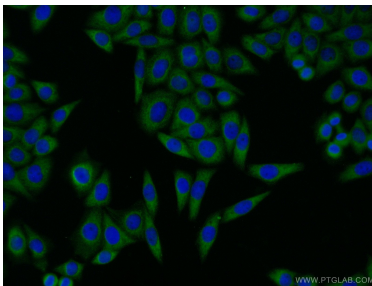
Immunohistochemical analysis of paraffin-embedded human prostate cancer tissue slide using 25183-1-AP (GBF1 Antibody) at dilution of 1:200 (under 10x lens). Heat mediated antigen retrieval with Tris-EDTA buffer (pH 9.0).



Immunohistochemical analysis of paraffin-embedded human prostate cancer tissue slide using 25183-1-AP (GBF1 Antibody) at dilution of 1:200 (under 40x lens). Heat mediated antigen retrieval with Tris-EDTA buffer (pH 9.0).



HeLa cells were subjected to SDS PAGE followed by western blot with 25183-1-AP (GBF1 Antibody) at dilution of 1:600 incubated at room temperature for 1.5 hours.



Immunofluorescent analysis of HeLa cells using 25183-1-AP (GBF1 antibody) at dilution of 1:25 and Alexa Fluor 488-conjugated Goat Anti-Rabbit IgG(H+L).