

For Research Use Only

Glypican 3 Polyclonal antibody, PBS Only

Catalog Number: 25175-1-PBS



Basic Information

Catalog Number:	25175-1-PBS	GenBank Accession Number:	BC035972	Purification Method:	Antigen affinity purification
Concentration:	1 mg/ml	GeneID (NCBI):	2719		
Source:	Rabbit	UNIPROT ID:	P51654		
Isotype:	IgG	Full Name:	glypican 3		
Immunogen Catalog Number:	AG10129	Calculated MW:	580 aa, 66 kDa		
		Observed MW:	66 kDa		

Applications

Tested Applications:
WB, Indirect ELISA

Species Specificity:
human

Background Information

Glypicans (GPCs) are a family of glycosylphosphatidylinositol (GPI)-anchored heparan sulphate proteoglycans (HSPGs) that may play a role in the control of cell division and growth regulation. In mammals, there are six GPCs (GPC1 to GPC6), all of which have a similar core-protein size of approx. 60 kDa and the clustering of glycosaminoglycan attachment site near the C-terminus. They are tethered to the cell surface by GPI linkages, which can be cleaved by endogenous phospholipases, thus releasing the protein. Glypican 3 (GPC3) is highly expressed in many tissues during development and plays an important role in the regulation of embryonic growth (PMID: 22467855). Loss-of-function mutations of GPC3 result in the Simpson-Golabi-Behmel overgrowth syndrome (SGBS), and Gpc-3 null mice display developmental overgrowth (PMID: 8589713; 18477453). In hepatocellular carcinoma (HCC), the overexpression of glypican 3 has been demonstrated to be a reliable diagnostic indicator (PMID: 19212669; 22706665). The calculated molecular weight of native glypican 3 is 66 kDa, glycanated forms of glypican 3 have higher molecular weights than 66 kDa (PMID: 12851874; 16024626; 19574424).

Storage

Storage:
Store at -80°C.

The product is shipped with ice packs. Upon receipt, store it immediately at -80°C

Storage Buffer:
PBS only, pH7.3

For technical support and original validation data for this product please contact:

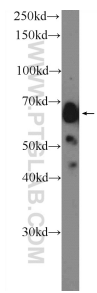
T: 4006900926

E: Proteintech-CN@ptglab.com

W: ptgcn.com

This product is exclusively available under Proteintech Group brand and is not available to purchase from any other manufacturer.

Selected Validation Data



HEK-293 cells were subjected to SDS PAGE followed by western blot with 25175-1-AP (Glypican 3 antibody) at dilution of 1:600 incubated at room temperature for 1.5 hours. This data was developed using the same antibody clone with 25175-1-PBS in a different storage buffer formulation.

HepG2 cells were subjected to SDS PAGE followed by western blot with 25175-1-AP (Glypican 3 antibody) at dilution of 1:600 incubated at room temperature for 1.5 hours. This data was developed using the same antibody clone with 25175-1-PBS in a different storage buffer formulation.