

For Research Use Only

QPRT Polyclonal antibody

Catalog Number: 25174-1-AP

Featured Product

8 Publications



Basic Information

Catalog Number:

25174-1-AP

Concentration:

750 ug/ml

Source:

Rabbit

Isotype:

IgG

Immunogen Catalog Number:

AG17680

GenBank Accession Number:

BC018910

GeneID (NCBI):

23475

UNIPROT ID:

Q15274

Full Name:

quinolinate
phosphoribosyltransferase

Calculated MW:

297 aa, 31 kDa

Observed MW:

31 kDa

Purification Method:

Antigen affinity purification

Recommended Dilutions:

WB: 1:1000-1:4000

IF/ICC: 1:50-1:500

Applications

Tested Applications:

WB, IF/ICC, ELISA

Cited Applications:

WB, IHC, IF

Species Specificity:

human

Cited Species:

human, mouse

Positive Controls:

WB : HepG2 cells, L02 cells

IF/ICC : HepG2 cells,

Background Information

QPRT, QAPRTase and QPRTase, is Nicotinate-nucleotide pyrophosphorylase which involved in the catabolism of quinolinic acid (QA). There're some isoforms with MW 31-33 kDa, 37 kDa and 42 kDa.

Notable Publications

Author	Pubmed ID	Journal	Application
Teresa W-M Fan	36150727	J Immunol	
Xiaohan Jin	36243112	J Biol Chem	WB
Xiao Y Zhou	34079576	Front Genet	IHC

Storage

Storage:

Store at -20°C. Stable for one year after shipment.

Storage Buffer:

PBS with 0.02% sodium azide and 50% glycerol, pH7.3

Aliquoting is unnecessary for -20°C storage

For technical support and original validation data for this product please contact:

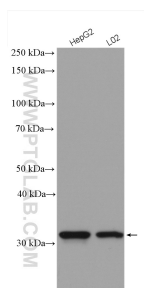
T: 4006900926

E: Proteintech-CN@ptglab.com

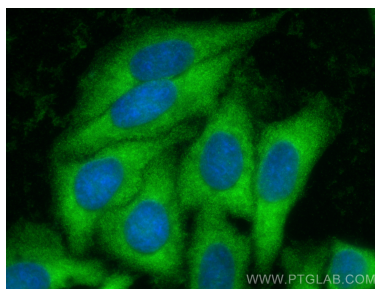
W: ptgcn.com

This product is exclusively available under Proteintech Group brand and is not available to purchase from any other manufacturer.

Selected Validation Data



Various lysates were subjected to SDS PAGE followed by western blot with 25174-1-AP (QPRT antibody) at dilution of 1:2000 incubated at room temperature for 1.5 hours.



Immunofluorescent analysis of (-20°C Ethanol) fixed HepG2 cells using QPRT antibody (25174-1-AP) at dilution of 1:200 and CoraLite® 488-Conjugated Goat Anti-Rabbit IgG(H+L) (SA00013-2).