

# HIVEP1 Polyclonal antibody

Catalog Number: 25168-1-AP

## Basic Information

<b>Catalog Number:</b> 25168-1-AP	<b>GenBank Accession Number:</b> BC140816	<b>Purification Method:</b> Antigen affinity purification
<b>Size:</b> 900 µg/ml	<b>GeneID (NCBI):</b> 3096	<b>Recommended Dilutions:</b> IHC 1:20-1:200
<b>Source:</b> Rabbit	<b>UNIPROT ID:</b> P15822	
<b>Isotype:</b> IgG	<b>Full Name:</b> human immunodeficiency virus type I enhancer binding protein 1	
<b>Immunogen Catalog Number:</b> AG18462	<b>Calculated MW:</b> 2718 aa, 297 kDa	

## Applications

<b>Tested Applications:</b> IHC, ELISA	<b>Positive Controls:</b> IHC : human stomach tissue, human testis tissue
<b>Species Specificity:</b> human	
<b>Note-IHC:</b> suggested antigen retrieval with <b>TE buffer pH 9.0; (*) Alternatively, antigen retrieval may be performed with citrate buffer pH 6.0</b>	

## Background Information

HIVEP1 (human immunodeficiency virus type I enhancer binding protein 1), also known as CIRIP (cirhin interaction protein), MBP-1 (major histocompatibility complex binding protein 1), ZNF40, CRYBP1 or PRDII-BF1 (positive regulatory domain II binding factor 1), is a 2718 amino acid DNA-binding protein, which contains five C2H2-type zinc fingers. HIVEP1 may also participate in T-cell activation and apoptosis.

## Storage

**Storage:**  
Store at -20°C. Stable for one year after shipment.  
**Storage Buffer:**  
PBS with 0.02% sodium azide and 50% glycerol pH 7.3.  
Aliquoting is unnecessary for -20°C storage

For technical support and original validation data for this product please contact:

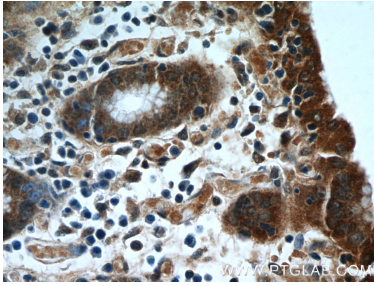
T: 4006900926

E: [Proteintech-CN@ptglab.com](mailto:Proteintech-CN@ptglab.com)

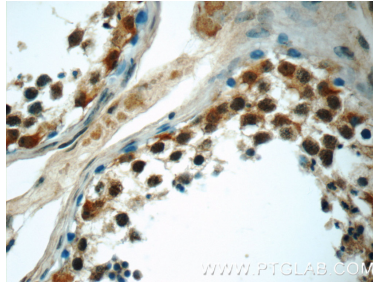
W: [ptgcn.com](http://ptgcn.com)

This product is exclusively available under Proteintech Group brand and is not available to purchase from any other manufacturer.

## Selected Validation Data



Immunohistochemical analysis of paraffin-embedded human stomach tissue slide using 25168-1-AP (HIVEP1 Antibody) at dilution of 1:50 (under 40x lens).



Immunohistochemical analysis of paraffin-embedded human testis tissue slide using 25168-1-AP (HIVEP1 Antibody) at dilution of 1:50 (under 40x lens).