

For Research Use Only

PTCD3 Polyclonal antibody

Catalog Number: 25158-1-AP

4 Publications



Basic Information

Catalog Number:

25158-1-AP

Size:

600 µg/ml

Source:

Rabbit

Isotype:

IgG

Immunogen Catalog Number:

AG18330

GenBank Accession Number:

BC011832

GeneID (NCBI):

55037

UNIPROT ID:

Q96EY7

Full Name:

Pentatricopeptide repeat domain 3

Calculated MW:

689 aa, 79 kDa

Observed MW:

78-80 kDa

Purification Method:

Antigen affinity purification

Recommended Dilutions:

WB 1:500-1:1000

IP 0.5-4.0 µg for 1.0-3.0 mg of total protein lysate

IF/ICC 1:20-1:200

Applications

Tested Applications:

WB, IF/ICC, IP, ELISA

Cited Applications:

WB

Species Specificity:

human, mouse, rat

Cited Species:

human

Positive Controls:

WB : mouse embryo tissue, HEK-293 cells, rat heart tissue, rat kidney tissue

IP : HEK-293 cells,

IF/ICC : HEK-293 cells,

Background Information

Notable Publications

Author	Pubmed ID	Journal	Application
Seongki Min	34772924	Cell Death Dis	WB
Loukmane Karim	35884802	Biomedicines	WB
Taru Hilander	39015150	iScience	

Storage

Storage:

Store at -20°C. Stable for one year after shipment.

Storage Buffer:

PBS with 0.02% sodium azide and 50% glycerol pH 7.3.

Aliquoting is unnecessary for -20°C storage

For technical support and original validation data for this product please contact:

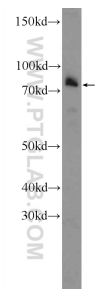
T: 4006900926

E: Proteintech-CN@ptglab.com

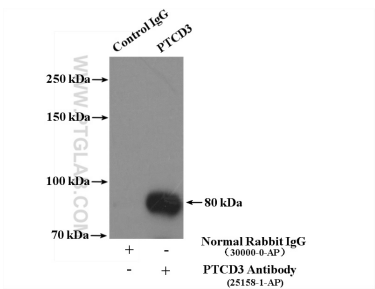
W: ptgcn.com

This product is exclusively available under Proteintech Group brand and is not available to purchase from any other manufacturer.

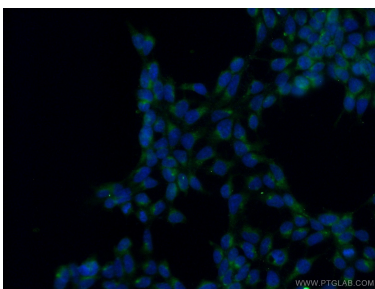
Selected Validation Data



mouse embryo tissue were subjected to SDS PAGE followed by western blot with 25158-1-AP (PTCD3 Antibody) at dilution of 1:600 incubated at room temperature for 1.5 hours.



IP result of anti-PTCD3 (IP:25158-1-AP, 4ug; Detection:25158-1-AP 1:600) with HEK-293 cells lysate 3600ug.



Immunofluorescent analysis of (-20℃ Ethanol) fixed HEK-293 cells using 25158-1-AP (PTCD3 antibody) at dilution of 1:50 and Alexa Fluor 488-conjugated Goat Anti-Rabbit IgG(H+L).