

For Research Use Only

# SYPL1 Polyclonal antibody, PBS Only

Catalog Number: 25145-1-PBS



## Basic Information

<b>Catalog Number:</b> 25145-1-PBS	<b>GenBank Accession Number:</b> BC020938	<b>Purification Method:</b> Antigen affinity purification
<b>Concentration:</b> 1 mg/ml	<b>GeneID (NCBI):</b> 6856	
<b>Source:</b> Rabbit	<b>UNIPROT ID:</b> Q16563	
<b>Isotype:</b> IgG	<b>Full Name:</b> synaptophysin-like 1	
<b>Immunogen Catalog Number:</b> AG18482	<b>Calculated MW:</b> 259 aa, 29 kDa	
	<b>Observed MW:</b> 30 kDa	

## Applications

**Tested Applications:**  
WB, Indirect ELISA

**Species Specificity:**  
human, mouse

## Background Information

Synaptophysin-like 1 (pantophysin, SYPL1), a neuroendocrine-related protein, is abundant in adipocytes and is found in cellular membrane compartments overlapping with those containing the insulin-sensitive glucose transporter type 4 (GLUT4). SYPL1, which is also found in both neuronal and non-neuronal tissues, plays an important role in inflammation, tumor proliferation, and progression.

## Storage

**Storage:**  
Store at -80°C.  
**The product is shipped with ice packs. Upon receipt, store it immediately at -80°C**

**Storage Buffer:**  
PBS only, pH7.3

For technical support and original validation data for this product please contact:

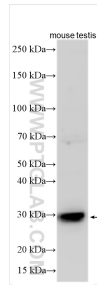
T: 4006900926

E: [Proteintech-CN@ptglab.com](mailto:Proteintech-CN@ptglab.com)

W: [ptgcn.com](http://ptgcn.com)

**This product is exclusively available under Proteintech Group brand and is not available to purchase from any other manufacturer.**

## Selected Validation Data



Various lysates were subjected to SDS PAGE followed by western blot with 25145-1-AP (SYPL1 antibody) at dilution of 1:1500 incubated at room temperature for 1.5 hours. This data was developed using the same antibody clone with 25145-1-PBS in a different storage buffer formulation.