

For Research Use Only

SYPL1 Polyclonal antibody

Catalog Number: 25145-1-AP



Basic Information

Catalog Number:

25145-1-AP

Concentration:

350 ug/ml

Source:

Rabbit

Isotype:

IgG

Immunogen Catalog Number:

AG18482

GenBank Accession Number:

BC020938

GeneID (NCBI):

6856

UNIPROT ID:

Q16563

Full Name:

synaptophysin-like 1

Calculated MW:

259 aa, 29 kDa

Observed MW:

30 kDa

Purification Method:

Antigen affinity purification

Recommended Dilutions:

WB: 1:500-1:3000

Applications

Tested Applications:

WB, ELISA

Species Specificity:

human, mouse

Positive Controls:

WB : mouse testis tissue,

Background Information

Synaptophysin-like 1 (pantophysin, SYPL1), a neuroendocrine-related protein, is abundant in adipocytes and is found in cellular membrane compartments overlapping with those containing the insulin-sensitive glucose transporter type 4 (GLUT4). SYPL1, which is also found in both neuronal and non-neuronal tissues, plays an important role in inflammation, tumor proliferation, and progression.

Storage

Storage:

Store at -20°C. Stable for one year after shipment.

Storage Buffer:

PBS with 0.02% sodium azide and 50% glycerol, pH7.3

Aliquoting is unnecessary for -20°C storage

For technical support and original validation data for this product please contact:

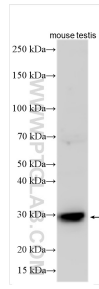
T: 4006900926

E: Proteintech-CN@ptglab.com

W: ptgcn.com

This product is exclusively available under Proteintech Group brand and is not available to purchase from any other manufacturer.

Selected Validation Data



Various lysates were subjected to SDS PAGE followed by western blot with 25145-1-AP (SYPL1 antibody) at dilution of 1:1500 incubated at room temperature for 1.5 hours.