

WDFY3 / ALFY Polyclonal antibody

Catalog Number: 25134-1-AP

Basic Information

Catalog Number:

25134-1-AP

Size:

900 µg/ml

Source:

Rabbit

Isotype:

IgG

Immunogen Catalog Number:

AG18393

GenBank Accession Number:

BC013377

GeneID (NCBI):

23001

UNIPROT ID:

Q8IZQ1

Full Name:

WD repeat and FYVE domain
containing 3

Calculated MW:

3526 aa, 395 kDa

Purification Method:

Antigen affinity purification

Recommended Dilutions:

IHC 1:200-1:800

Applications

Tested Applications:

IHC, ELISA

Species Specificity:

human

Positive Controls:

IHC : human breast cancer tissue, human ovary tumor
tissue

Note-IHC: suggested antigen retrieval with
**TE buffer pH 9.0; (*) Alternatively, antigen
retrieval may be performed with citrate
buffer pH 6.0**

Background Information

WDFY3 also called ALFY, is a phosphatidylinositol 3-phosphate-binding protein that functions as a master conductor for aggregate clearance by autophagy. This protein shuttles from the nuclear membrane to colocalize with aggregated proteins, where it complexes with other autophagic components to achieve macroautophagy-mediated clearance of these aggregated proteins. However, it is not necessary for starvation-induced macroautophagy.

Storage

Storage:

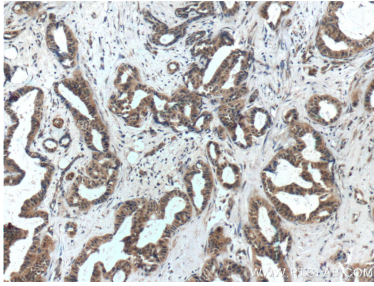
Store at -20°C. Stable for one year after shipment.

Storage Buffer:

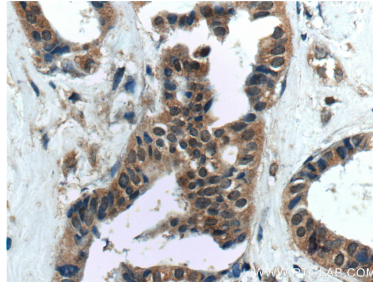
PBS with 0.02% sodium azide and 50% glycerol pH 7.3.

Aliquoting is unnecessary for -20°C storage

Selected Validation Data



Immunohistochemical analysis of paraffin-embedded human breast cancer tissue slide using 25134-1-AP (WDFY3 / ALFY antibody at dilution of 1:400 (under 10x lens).



Immunohistochemical analysis of paraffin-embedded human breast cancer tissue slide using 25134-1-AP (WDFY3 / ALFY antibody at dilution of 1:400 (under 40x lens).