

For Research Use Only

# BTNL2 Polyclonal antibody

Catalog Number: 25110-1-AP

1 Publications



## Basic Information

Catalog Number:

25110-1-AP

Size:

350 µg/ml

Source:

Rabbit

Isotype:

IgG

Immunogen Catalog Number:

AG18803

GenBank Accession Number:

BC127642

GeneID (NCBI):

56244

UNIPROT ID:

Q9UIRO

Full Name:

butyrophilin-like 2 (MHC class II associated)

Calculated MW:

455 aa, 50 kDa

Observed MW:

65 kDa

Purification Method:

Antigen affinity purification

Recommended Dilutions:

WB 1:1000-1:4000

## Applications

Tested Applications:

WB, ELISA

Cited Applications:

WB

Species Specificity:

human, mouse

Cited Species:

human

Positive Controls:

WB : HL-60 cells, mouse kidney tissue, HepG2 cells, K-562 cells

## Background Information

Butyrophilin-like protein 2 (BTNL2) is a transmembrane immunoregulatory protein that is highly expressed in the gastrointestinal tract. BTNL2 belongs to the butyrophilin-like family of proteins, and several of the butyrophilins and butyrophilin-like proteins, such as BTN2A1, BTN3A1, skint-1, BTNL1 and BTNL6, have been shown to play an essential role in regulating  $\gamma$   $\delta$  T cell development and differentiation.

## Notable Publications

Author	Pubmed ID	Journal	Application
Yanyun Du	35017553	Nat Commun	WB

## Storage

Storage:

Store at -20°C. Stable for one year after shipment.

Storage Buffer:

PBS with 0.02% sodium azide and 50% glycerol pH 7.3.

Aliquoting is unnecessary for -20°C storage

For technical support and original validation data for this product please contact:

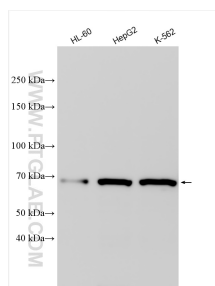
T: 4006900926

E: [Proteintech-CN@ptglab.com](mailto:Proteintech-CN@ptglab.com)

W: [ptgcn.com](http://ptgcn.com)

This product is exclusively available under Proteintech Group brand and is not available to purchase from any other manufacturer.

## Selected Validation Data



Various lysates were subjected to SDS PAGE followed by western blot with 25110-1-AP (BTNL2 antibody) at dilution of 1:2000 incubated at room temperature for 1.5 hours.