

PPM1E Polyclonal antibody

Catalog Number: 25089-1-AP

Basic Information

Catalog Number:

25089-1-AP

Size:

900 µg/ml

Source:

Rabbit

Isotype:

IgG

Immunogen Catalog Number:

AG18751

GenBank Accession Number:

BC136290

GeneID (NCBI):

22843

UNIPROT ID:

Q8WY54

Full Name:

protein phosphatase 1E (PP2C domain containing)

Calculated MW:

764 aa, 85 kDa

Observed MW:

85 kDa

Purification Method:

Antigen affinity purification

Recommended Dilutions:

WB 1:5000-1:50000

IHC 1:50-1:500

IF/ICC 1:200-1:800

Applications

Tested Applications:

WB, IHC, IF/ICC, ELISA

Species Specificity:

human, mouse, rat

Note-IHC: suggested antigen retrieval with TE buffer pH 9.0; (*) Alternatively, antigen retrieval may be performed with citrate buffer pH 6.0

Positive Controls:

WB : human brain tissue, mouse brain tissue, rat brain tissue

IHC : rat brain tissue,

IF/ICC : SH-SY5Y cells, A431 cells

Background Information

Ca²⁺/calmodulin-dependent protein kinase phosphatase (CaMKP-N), also known as Ppm1E, is an AMPK α phosphatase, which is up-regulated in human gastric cancer tissues (PMID: 28423719).

Storage

Storage:

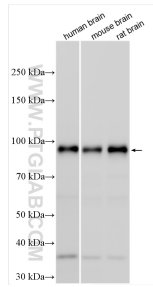
Store at -20°C. Stable for one year after shipment.

Storage Buffer:

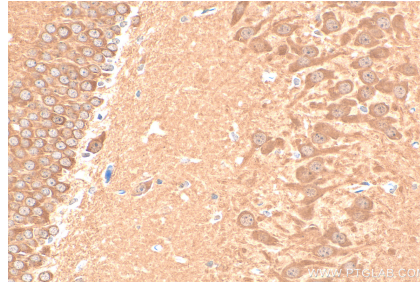
PBS with 0.02% sodium azide and 50% glycerol pH 7.3.

Aliquoting is unnecessary for -20°C storage

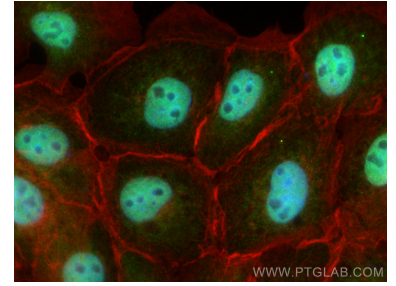
Selected Validation Data



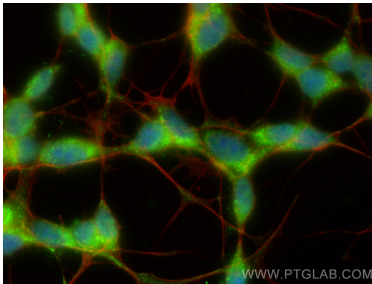
Various lysates were subjected to SDS PAGE followed by western blot with 25089-1-AP (PPM1E antibody) at dilution of 1:10000 incubated at room temperature for 1.5 hours.



Immunohistochemical analysis of paraffin-embedded rat brain tissue slide using 25089-1-AP (PPM1E antibody) at dilution of 1:200 (under 40x lens). Heat mediated antigen retrieval with Tris-EDTA buffer (pH 9.0).



Immunofluorescent analysis of (4% PFA) fixed A431 cells using PPM1E antibody (25089-1-AP) at dilution of 1:400 and CoraLite®488-Conjugated AffiniPure Goat Anti-Rabbit IgG(H+L), CL594-Phalloidin (red).



Immunofluorescent analysis of (-20°C Ethanol) fixed SH-SY5Y cells using PPM1E antibody (25089-1-AP) at dilution of 1:400 and CoraLite®488-Conjugated AffiniPure Goat Anti-Rabbit IgG(H+L), CL594-Phalloidin (red).