

For Research Use Only

DOCK6 Polyclonal antibody

Catalog Number: 25087-1-AP

2 Publications



Basic Information

Catalog Number:

25087-1-AP

Size:

350 µg/ml

Source:

Rabbit

Isotype:

IgG

Immunogen Catalog Number:

AG18901

GenBank Accession Number:

BC146786

GeneID (NCBI):

57572

UNIPROT ID:

Q96HP0

Full Name:

dedicator of cytokinesis 6

Calculated MW:

2047 aa, 230 kDa

Observed MW:

230 kDa

Purification Method:

Antigen affinity purification

Recommended Dilutions:

WB 1:500-1:1000

IHC 1:50-1:500

Applications

Tested Applications:

IHC, WB, ELISA

Cited Applications:

WB, IF

Species Specificity:

human

Cited Species:

human

Note-IHC: suggested antigen retrieval with TE buffer pH 9.0; (*) Alternatively, antigen retrieval may be performed with citrate buffer pH 6.0

Positive Controls:

WB : COLO 320 cells,

IHC : human colon tissue, human colon cancer tissue

Background Information

Notable Publications

Author	Pubmed ID	Journal	Application
Mariam Dessay	35241069	BMC Med Genomics	WB
Li Wang	31915373	Nat Cell Biol	IF

Storage

Storage:

Store at -20°C. Stable for one year after shipment.

Storage Buffer:

PBS with 0.02% sodium azide and 50% glycerol pH 7.3.

Aliquoting is unnecessary for -20°C storage

For technical support and original validation data for this product please contact:

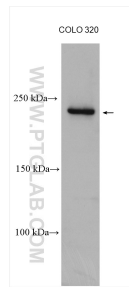
T: 4006900926

E: Proteintech-CN@ptglab.com

W: ptgcn.com

This product is exclusively available under Proteintech Group brand and is not available to purchase from any other manufacturer.

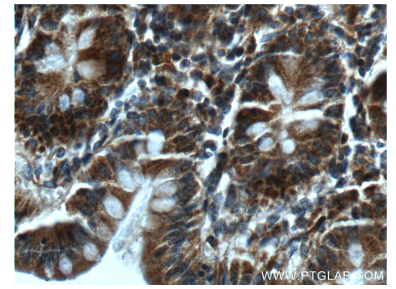
Selected Validation Data



COLO 320 cells were subjected to SDS PAGE followed by western blot with 25087-1-AP (DOCK6 antibody) at dilution of 1:800 incubated at room temperature for 1.5 hours.



Immunohistochemical analysis of paraffin-embedded human colon tissue slide using 25087-1-AP (DOCK6 Antibody) at dilution of 1:200 (under 10x lens).



Immunohistochemical analysis of paraffin-embedded human colon tissue slide using 25087-1-AP (DOCK6 Antibody) at dilution of 1:200 (under 40x lens).