

For Research Use Only

SIPA1L1 Polyclonal antibody

Catalog Number: 25086-1-AP

3 Publications



Basic Information

Catalog Number:

25086-1-AP

Size:

900 ug/ml

Source:

Rabbit

Isotype:

IgG

Immunogen Catalog Number:

AG18900

GenBank Accession Number:

BC146777

GeneID (NCBI):

26037

UNIPROT ID:

O43166

Full Name:

signal-induced proliferation-associated 1 like 1

Calculated MW:

1803 aa, 200 kDa

Observed MW:

200 kDa

Purification Method:

Antigen affinity purification

Recommended Dilutions:

WB 1:1000-1:6000

IP 0.5-4.0 ug for 1.0-3.0 mg of total protein lysate

IHC 1:50-1:500

Applications

Tested Applications:

WB, IHC, IP, ELISA

Cited Applications:

WB, IF, IP

Species Specificity:

human, mouse, rat

Cited Species:

human, mouse

Note-IHC: suggested antigen retrieval with TE buffer pH 9.0; (*) Alternatively, antigen retrieval may be performed with citrate buffer pH 6.0

Positive Controls:

WB : mouse brain tissue, HeLa cells, rat brain tissue

IP : mouse brain tissue,

IHC : human brain tissue, human pancreas tissue

Background Information

Notable Publications

Author	Pubmed ID	Journal	Application
Sophie Laguesse	28890345	Neuron	WB,IP
Chenyu Xu	39361424	JCI Insight	WB,IF
Zachary W Hoisington	38915579	bioRxiv	WB

Storage

Storage:

Store at -20°C. Stable for one year after shipment.

Storage Buffer:

PBS with 0.02% sodium azide and 50% glycerol pH 7.3.

Aliquoting is unnecessary for -20°C storage

For technical support and original validation data for this product please contact:

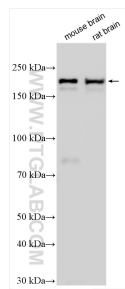
T: 4006900926

E: Proteintech-CN@ptglab.com

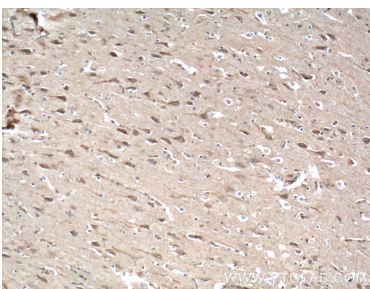
W: ptgcn.com

This product is exclusively available under Proteintech Group brand and is not available to purchase from any other manufacturer.

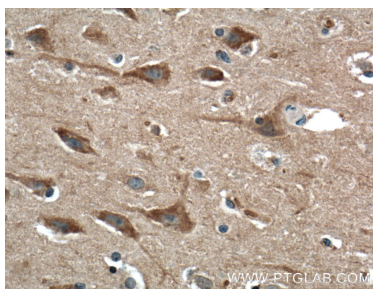
Selected Validation Data



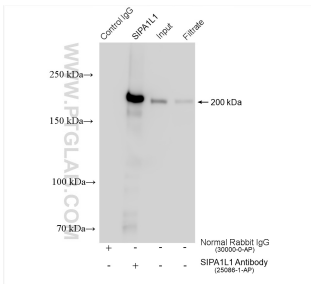
Various lysates were subjected to SDS PAGE followed by western blot with 25086-1-AP (SIPA1L1 antibody) at dilution of 1:3000 incubated at room temperature for 1.5 hours.



Immunohistochemical analysis of paraffin-embedded human brain tissue slide using 25086-1-AP (SIPA1L1 Antibody) at dilution of 1:200 (under 10x lens). Heat mediated antigen retrieval with Tris-EDTA buffer (pH 9.0).



Immunohistochemical analysis of paraffin-embedded human brain tissue slide using 25086-1-AP (SIPA1L1 Antibody) at dilution of 1:200 (under 40x lens). Heat mediated antigen retrieval with Tris-EDTA buffer (pH 9.0).



IP result of anti-SIPA1L1 (IP:25086-1-AP, 4ug; Detection:25086-1-AP 1:3000) with mouse brain tissue lysate 1280 ug.