

For Research Use Only

# GNE Polyclonal antibody

Catalog Number: 25079-1-AP

Featured Product

4 Publications



## Basic Information

### Catalog Number:

25079-1-AP

### Size:

800 ug/ml

### Source:

Rabbit

### Isotype:

IgG

### Immunogen Catalog Number:

AG18689

### GenBank Accession Number:

BC121179

### GeneID (NCBI):

10020

### UNIPROT ID:

Q9Y223

### Full Name:

glucosamine (UDP-N-acetyl)-2-epimerase/N-acetylmannosamine kinase

### Calculated MW:

722 aa, 79 kDa

### Observed MW:

79 kDa

### Purification Method:

Antigen affinity purification

### Recommended Dilutions:

WB 1:1000-1:5000

IP 0.5-4.0 ug for 1.0-3.0 mg of total protein lysate

IHC 1:20-1:200

## Applications

### Tested Applications:

WB, IHC, IP, ELISA

### Cited Applications:

WB, IHC, IF, IP

### Species Specificity:

human, mouse, rat

### Cited Species:

human, mouse

### Positive Controls:

WB : mouse liver tissue, Jurkat cells, RAW 264.7 cells, rat liver tissue

IP : Jurkat cells,

IHC : human kidney tissue, human placenta tissue

**Note-IHC: suggested antigen retrieval with TE buffer pH 9.0; (\*) Alternatively, antigen retrieval may be performed with citrate buffer pH 6.0**

## Background Information

The bifunctional enzyme UDP-N-acetylglucosamine-2-epimerase/N-acetylmannosamine kinase (GNE) is essential for early embryonic development and catalyzes the rate limiting step in sialic acid biosynthesis. It plays an important role in neuronal cell and brain development, and is strongly involved in cardiac tissue and skeletal muscle early survival and organization.. This protein has 5 isoforms produced by alternative splicing.

## Notable Publications

Author	Pubmed ID	Journal	Application
Nili Ilouz	36237634	Front Genome Ed	WB,IF,IP
Xinying Guo	36429052	Cells	IHC
Chun-Ming Li	36353937	Neoplasma	WB

## Storage

### Storage:

Store at -20°C. Stable for one year after shipment.

### Storage Buffer:

PBS with 0.02% sodium azide and 50% glycerol pH 7.3.

Aliquoting is unnecessary for -20°C storage

For technical support and original validation data for this product please contact:

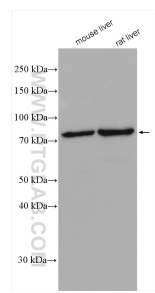
T: 4006900926

E: [Proteintech-CN@ptglab.com](mailto:Proteintech-CN@ptglab.com)

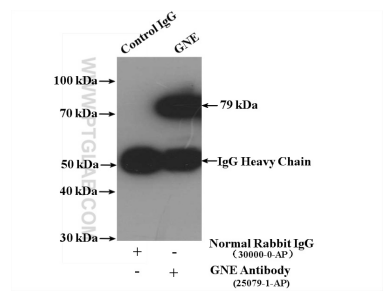
W: [ptgcn.com](http://ptgcn.com)

**This product is exclusively available under Proteintech Group brand and is not available to purchase from any other manufacturer.**

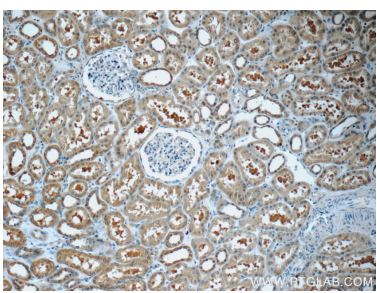
Selected Validation Data



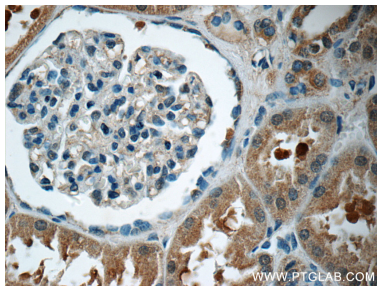
Various lysates were subjected to SDS PAGE followed by western blot with 25079-1-AP (GNE antibody) at dilution of 1:4000 incubated at room temperature for 1.5 hours.



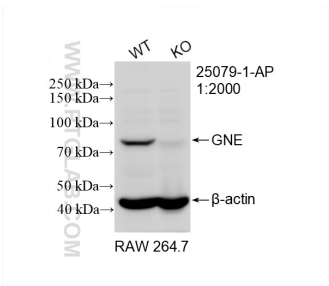
IP result of anti-GNE (IP:25079-1-AP, 4ug; Detection:25079-1-AP 1:500) with Jurkat cells lysate 3600ug.



Immunohistochemical analysis of paraffin-embedded human kidney tissue slide using 25079-1-AP (GNE Antibody) at dilution of 1:50 (under 10x lens).



Immunohistochemical analysis of paraffin-embedded human kidney tissue slide using 25079-1-AP (GNE Antibody) at dilution of 1:50 (under 40x lens).



WB result of GNE antibody (25079-1-AP; 1:2000; room temperature for 1.5 hours) with wild-type and GNE knockout RAW 264.7 cells.