

# GDPD2 Polyclonal antibody

Catalog Number: 25074-1-AP

## Basic Information

**Catalog Number:**

25074-1-AP

**Size:**

500 µg/ml

**Source:**

Rabbit

**Isotype:**

IgG

**Immunogen Catalog Number:**

AG18377

**GenBank Accession Number:**

BC032009

**GeneID (NCBI):**

54857

**UNIPROT ID:**

Q9HCC8

**Full Name:**

glycerophosphodiester  
phosphodiesterase domain  
containing 2

**Calculated MW:**

539 aa, 62 kDa

**Observed MW:**

62 kDa

**Purification Method:**

Antigen affinity purification

**Recommended Dilutions:**

WB 1:500-1:1000

IHC 1:100-1:400

## Applications

**Tested Applications:**

IHC, WB, ELISA

**Species Specificity:**

human, mouse

**Note-IHC: suggested antigen retrieval with  
TE buffer pH 9.0; (\*) Alternatively, antigen  
retrieval may be performed with citrate  
buffer pH 6.0**

**Positive Controls:**

WB : mouse skin tissue,

IHC : human liver cancer tissue,

## Background Information

GDPD2 (Glycerophosphoinositol inositolphosphodiesterase) is also named as GDE3, OBDPF and belongs to the glycerophosphoryl diester phosphodiesterase family. It has glycerophosphoinositol inositolphosphodiesterase activity and specifically hydrolyzes glycerophosphoinositol, with no activity for other substrates such as glycerophosphoinositol 4-phosphate, glycerophosphocholine, glycerophosphoethanolamine, and glycerophosphoserine. This protein has 3 isoforms produced by alternative splicing.

## Storage

**Storage:**

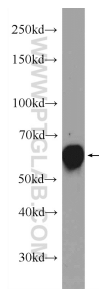
Store at -20°C. Stable for one year after shipment.

**Storage Buffer:**

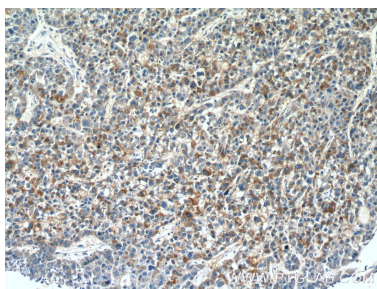
PBS with 0.02% sodium azide and 50% glycerol pH 7.3.

Aliquoting is unnecessary for -20°C storage

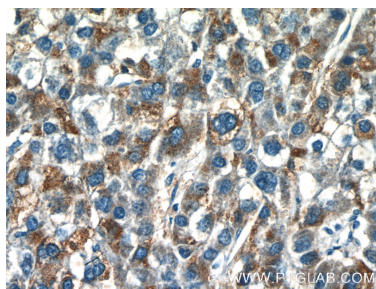
## Selected Validation Data



mouse skin tissue were subjected to SDS PAGE followed by western blot with 25074-1-AP (GDPD2 Antibody) at dilution of 1:600 incubated at room temperature for 1.5 hours.



Immunohistochemical analysis of paraffin-embedded human liver cancer tissue slide using 25074-1-AP (GDPD2 Antibody) at dilution of 1:200 (under 10x lens).



Immunohistochemical analysis of paraffin-embedded human liver cancer tissue slide using 25074-1-AP (GDPD2 Antibody) at dilution of 1:200 (under 40x lens).