

For Research Use Only

# KLHL15 Polyclonal antibody

Catalog Number: 25066-1-AP

2 Publications



## Basic Information

Catalog Number:

25066-1-AP

Size:

650 µg/ml

Source:

Rabbit

Isotype:

IgG

Immunogen Catalog Number:

AG16878

GenBank Accession Number:

BC109058

GeneID (NCBI):

80311

UNIPROT ID:

Q96M94

Full Name:

kelch-like 15 (Drosophila)

Calculated MW:

604 aa, 70 kDa

Observed MW:

70 kDa

Purification Method:

Antigen affinity purification

Recommended Dilutions:

WB 1:500-1:1000

IHC 1:50-1:500

## Applications

Tested Applications:

WB, IHC, ELISA

Cited Applications:

WB

Species Specificity:

human

Cited Species:

human

**Note-IHC: suggested antigen retrieval with TE buffer pH 9.0; (\*) Alternatively, antigen retrieval may be performed with citrate buffer pH 6.0**

Positive Controls:

WB : HeLa cells, HEK-293 cells

IHC : human prostate cancer tissue, human testis tissue, human brain tissue

## Background Information

### Notable Publications

Author	Pubmed ID	Journal	Application
Chuanhao Zhang	35219381	Mol Cell	WB
Wei Wu	39383226	Sci Adv	WB

## Storage

Storage:

Store at -20°C. Stable for one year after shipment.

Storage Buffer:

PBS with 0.02% sodium azide and 50% glycerol pH 7.3.

Aliquoting is unnecessary for -20°C storage

For technical support and original validation data for this product please contact:

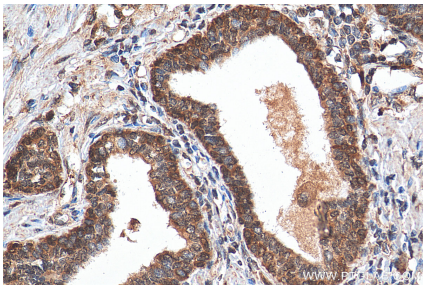
T: 4006900926

E: [Proteintech-CN@ptglab.com](mailto:Proteintech-CN@ptglab.com)

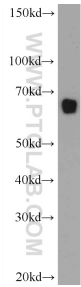
W: [ptgcn.com](http://ptgcn.com)

This product is exclusively available under Proteintech Group brand and is not available to purchase from any other manufacturer.

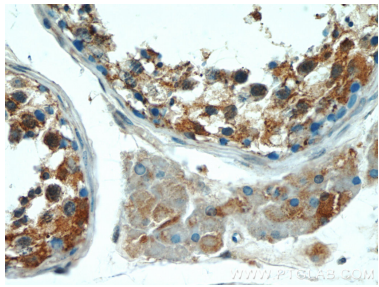
Selected Validation Data



Immunohistochemical analysis of paraffin-embedded human prostate cancer tissue slide using 25066-1-AP (KLHL15 antibody) at dilution of 1:200 (under 40x lens). Heat mediated antigen retrieval with Tris-EDTA buffer (pH 9.0).



HeLa cells were subjected to SDS PAGE followed by western blot with 25066-1-AP (KLHL15 Antibody) at dilution of 1:600 incubated at room temperature for 1.5 hours.



Immunohistochemical analysis of paraffin-embedded human testis tissue slide using 25066-1-AP (KLHL15 Antibody) at dilution of 1:50 (under 40x lens).