

## RNF135 Polyclonal antibody

Catalog Number: 25061-1-AP **1 Publications**

## Basic Information

<b>Catalog Number:</b> 25061-1-AP	<b>GenBank Accession Number:</b> BC005084	<b>Purification Method:</b> Antigen affinity purification
<b>Size:</b> 1000 µg/ml	<b>GeneID (NCBI):</b> 84282	<b>Recommended Dilutions:</b> WB 1:500-1:1000 IHC 1:100-1:400 IF 1:200-1:800
<b>Source:</b> Rabbit	<b>UNIPROT ID:</b> Q8IUD6	
<b>Isotype:</b> IgG	<b>Full Name:</b> ring finger protein 135	
<b>Immunogen Catalog Number:</b> AG18821	<b>Calculated MW:</b> 432 aa, 48 kDa	
	<b>Observed MW:</b> 48 kDa	

## Applications

<b>Tested Applications:</b> IF/ICC, IHC, WB, ELISA	<b>Positive Controls:</b> WB : mouse kidney tissue, U-87 MG cells IHC : human kidney tissue, human stomach tissue IF : PC-12 cells,
<b>Cited Applications:</b> WB	
<b>Species Specificity:</b> human, mouse	
<b>Cited Species:</b> human	
<b>Note-IHC: suggested antigen retrieval with TE buffer pH 9.0; (*) Alternatively, antigen retrieval may be performed with citrate buffer pH 6.0</b>	

## Background Information

Ring finger protein 135 (RNF135), located on chromosome 17q11.2, is a RING finger domain-containing E3 ubiquitin ligase that was identified as a bio-marker and therapy target of glioblastoma (PMID: 26856755). RNF135 facilitates RIG-I C-terminal ubiquitination to up-regulate RIG-I-mediated IFN signaling and suppress viral replication. This antibody can detect a band at 48 kDa as predicted.

## Notable Publications

Author	Pubmed ID	Journal	Application
Yuan-Qin Min	32471869	J Biol Chem	WB

## Storage

**Storage:**  
Store at -20°C. Stable for one year after shipment.  
**Storage Buffer:**  
PBS with 0.02% sodium azide and 50% glycerol pH 7.3.  
Aliquoting is unnecessary for -20°C storage

For technical support and original validation data for this product please contact:

T: 4006900926

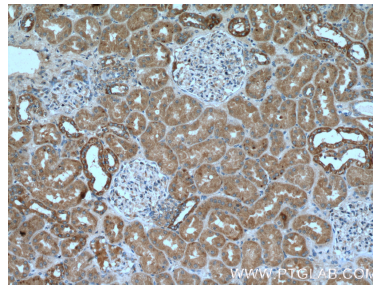
E: [Proteintech-CN@ptglab.com](mailto:Proteintech-CN@ptglab.com)W: [ptgcn.com](http://ptgcn.com)

**This product is exclusively available under Proteintech Group brand and is not available to purchase from any other manufacturer.**

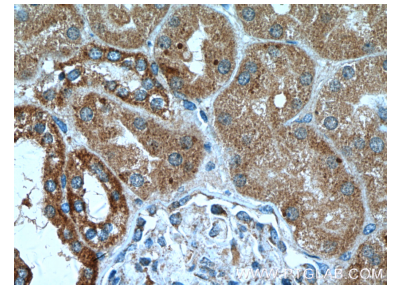
## Selected Validation Data



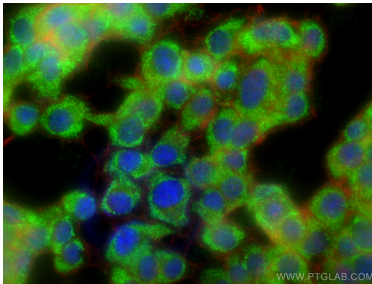
mouse kidney tissue were subjected to SDS PAGE followed by western blot with 25061-1-AP (RNF135 Antibody) at dilution of 1:600 incubated at room temperature for 1.5 hours.



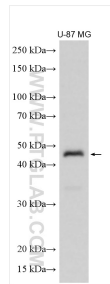
Immunohistochemical analysis of paraffin-embedded human kidney tissue slide using 25061-1-AP (RNF135 Antibody) at dilution of 1:200 (under 10x lens).



Immunohistochemical analysis of paraffin-embedded human kidney tissue slide using 25061-1-AP (RNF135 Antibody) at dilution of 1:200 (under 40x lens).



Immunofluorescent analysis of (-20°C Ethanol) fixed PC-12 cells using RNF135 antibody (25061-1-AP) at dilution of 1:400 and CoraLite®488-Conjugated AffiniPure Goat Anti-Rabbit IgG(H+L), CL594-Phalloidin (red).



Various lysates were subjected to SDS PAGE followed by western blot with 25061-1-AP (RNF135 antibody) at dilution of 1:800 incubated at room temperature for 1.5 hours.