

For Research Use Only

LPP Polyclonal antibody

Catalog Number: 25045-1-AP **1 Publications**



Basic Information

Catalog Number:

25045-1-AP

Size:

600 µg/ml

Source:

Rabbit

Isotype:

IgG

Immunogen Catalog Number:

AG19205

GenBank Accession Number:

BC130584

GeneID (NCBI):

4026

UNIPROT ID:

Q93052

Full Name:

LIM domain containing preferred translocation partner in lipoma

Calculated MW:

612 aa, 66 kDa

Observed MW:

70-75 kDa

Purification Method:

Antigen affinity purification

Recommended Dilutions:

WB 1:2000-1:10000

IP 0.5-4.0 µg for 1.0-3.0 mg of total protein lysate

IHC 1:20-1:200

IF 1:10-1:100

Applications

Tested Applications:

FC, IF/ICC, IHC, IP, WB, ELISA

Cited Applications:

WB, IF, IHC

Species Specificity:

human, mouse, rat

Cited Species:

human

Note-IHC: suggested antigen retrieval with TE buffer pH 9.0; (*) Alternatively, antigen retrieval may be performed with citrate buffer pH 6.0

Positive Controls:

WB: HeLa cells, MCF-7 cells, NIH/3T3 cells, mouse colon, mouse heart, rat heart

IP: HeLa cells,

IHC: human small intestine tissue, human kidney tissue

IF: HeLa cells,

Background Information

Notable Publications

Author	Pubmed ID	Journal	Application
Kanghua Xiao	37422473	Cell Death Dis	WB,IHC,IF

Storage

Storage:

Store at -20°C. Stable for one year after shipment.

Storage Buffer:

PBS with 0.02% sodium azide and 50% glycerol pH 7.3.

Aliquoting is unnecessary for -20°C storage

For technical support and original validation data for this product please contact:

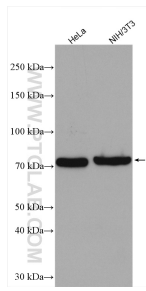
T: 4006900926

E: Proteintech-CN@ptglab.com

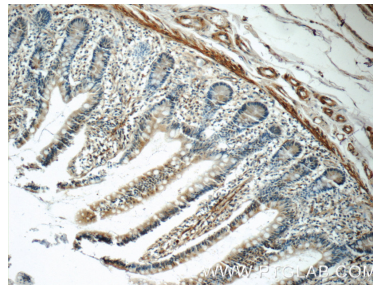
W: ptgcn.com

This product is exclusively available under Proteintech Group brand and is not available to purchase from any other manufacturer.

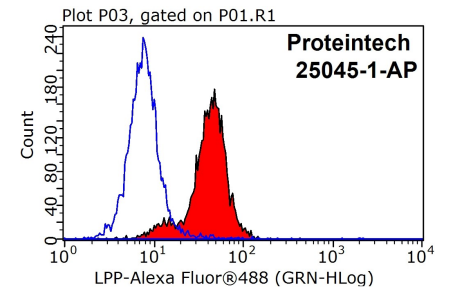
Selected Validation Data



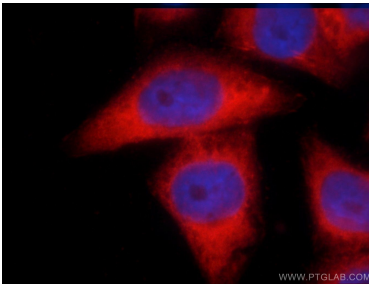
Various lysates were subjected to SDS PAGE followed by western blot with 25045-1-AP (LPP antibody) at dilution of 1:5000 incubated at room temperature for 1.5 hours.



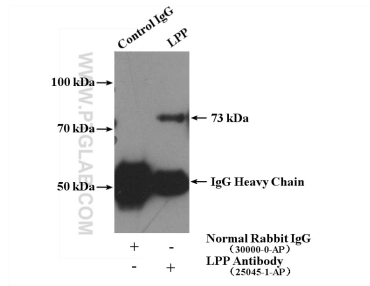
Immunohistochemical analysis of paraffin-embedded human small intestine tissue slide using 25045-1-AP (LPP Antibody) at dilution of 1:50 (under 10x lens).



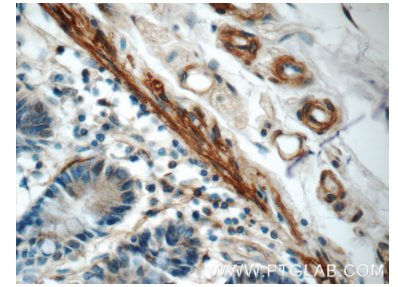
1X10⁶ HeLa cells were stained with 0.05ug LPP antibody (25045-1-AP, red) and control antibody (blue). Fixed with 90% MeOH blocked with 3% BSA (30 min). Alexa Fluor 488-Goat anti-Rabbit IgG with dilution 1:100.



Immunofluorescent analysis of HeLa cells using 25045-1-AP (LPP antibody) at dilution of 1:25 and Rhodamine-Goat anti-Rabbit IgG.



IP result of anti-LPP (IP:25045-1-AP, 4ug; Detection:25045-1-AP 1:1000) with HeLa cells lysate 3200ug.



Immunohistochemical analysis of paraffin-embedded human small intestine tissue slide using 25045-1-AP (LPP Antibody) at dilution of 1:50 (under 40x lens).