

For Research Use Only

# ABHD18 Polyclonal antibody, PBS Only

Catalog Number: 25036-1-PBS



## Basic Information

<b>Catalog Number:</b> 25036-1-PBS	<b>GenBank Accession Number:</b> BC128143	<b>Purification Method:</b> Antigen affinity purification
<b>Concentration:</b>	<b>GeneID (NCBI):</b> 80167	
<b>Source:</b> Rabbit	<b>UNIPROT ID:</b> Q0P651	
<b>Isotype:</b> IgG	<b>Full Name:</b> chromosome 4 open reading frame 29	
<b>Immunogen Catalog Number:</b> AG19120	<b>Calculated MW:</b> 414 aa, 47 kDa	
	<b>Observed MW:</b> 60 kDa	

## Applications

**Tested Applications:**  
WB, IHC, IF/ICC, Indirect ELISA

**Species Specificity:**  
human, mouse

## Background Information

ABHD18 ( $\alpha / \beta$  hydrolase domain-containing protein 18) is a transmembrane protein in mammals whose function has not yet been fully elucidated. It belongs to the large  $\alpha / \beta$  hydrolase superfamily, whose members typically possess hydrolase activity and are involved in a variety of metabolic reactions. The ABHD18 protein is localized on the lysosomal membrane and may participate in intracellular lipid metabolism or signal transduction processes. Recent studies have shown that ABHD18 is the key enzyme in human cells that catalyzes the deacylation of cardiolipin to MLCL. The loss of ABHD18 function can significantly alleviate mitochondrial supercomplex defects, energy metabolism disorders, and cardiomyopathy phenotypes caused by TAZ deficiency, even achieving a "genetic suppression" effect in mice and patient cells. This not only reveals ABHD18 as a core node in the cardiolipin remodeling pathway but also provides an entirely new therapeutic approach for mitochondrial diseases such as Barth syndrome.

## Storage

**Storage:**  
Store at -80°C.  
**The product is shipped with ice packs. Upon receipt, store it immediately at -80°C**

**Storage Buffer:**  
PBS only, pH7.3

For technical support and original validation data for this product please contact:

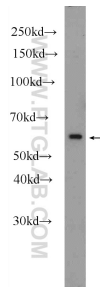
T: 4006900926

E: [Proteintech-CN@ptglab.com](mailto:Proteintech-CN@ptglab.com)

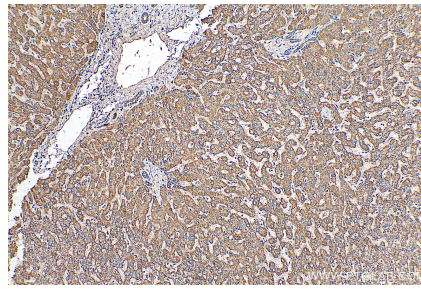
W: [ptgcn.com](http://ptgcn.com)

**This product is exclusively available under Proteintech Group brand and is not available to purchase from any other manufacturer.**

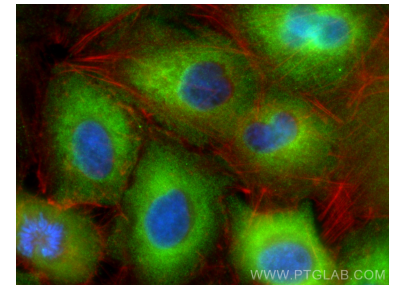
## Selected Validation Data



PC-3 cells were subjected to SDS PAGE followed by western blot with 25036-1-AP (C4orf29 Antibody) at dilution of 1:600 incubated at room temperature for 1.5 hours. This data was developed using the same antibody clone with 25036-1-PBS in a different storage buffer formulation.



Immunohistochemical analysis of paraffin-embedded human liver tissue slide using 25036-1-AP (C4orf29 antibody) at dilution of 1:200 (under 10x lens). Heat mediated antigen retrieval with Tris-EDTA buffer (pH 9.0). This data was developed using the same antibody clone with 25036-1-PBS in a different storage buffer formulation.



Immunofluorescent analysis of (4% PFA) fixed A549 cells using C4orf29 antibody (25036-1-AP) at dilution of 1:200 and CoraLite@488-Conjugated Goat Anti-Rabbit IgG(H+L) (SA00013-2), CL594-Phalloidin (red). This data was developed using the same antibody clone with 25036-1-PBS in a different storage buffer formulation.