

For Research Use Only

RELB Polyclonal antibody

Catalog Number: 25027-1-AP

12 Publications



Basic Information

Catalog Number:

25027-1-AP

Size:

700 ug/ml

Source:

Rabbit

Isotype:

IgG

Immunogen Catalog Number:

AG13824

GenBank Accession Number:

BC028013

GeneID (NCBI):

5971

UNIPROT ID:

Q01201

Full Name:

v-rel reticuloendotheliosis viral oncogene homolog B

Calculated MW:

62 kDa

Observed MW:

62-65 kDa

Purification Method:

Antigen affinity purification

Recommended Dilutions:

WB 1:1000-1:8000

IP 0.5-4.0 ug for 1.0-3.0 mg of total protein lysate

IHC 1:50-1:500

IF/ICC 1:200-1:800

Applications

Tested Applications:

WB, IHC, IF/ICC, IP, ELISA

Cited Applications:

WB, IHC, IF

Species Specificity:

human, mouse

Cited Species:

human, mouse, rat

Note-IHC: suggested antigen retrieval with TE buffer pH 9.0; (*) Alternatively, antigen retrieval may be performed with citrate buffer pH 6.0

Positive Controls:

WB : Daudi cells, Raji cells, Ramos cells

IP : Raji cells,

IHC : human colon cancer tissue, human lymphoma tissue

IF/ICC : HeLa cells,

Background Information

RELB, also named as Transcription factor RelB, is a 579 amino acid protein, which contains one RHD domain. RELB localizes in the nucleus and cytoplasm. RELB is a pleiotropic transcription factor which is present in almost all cell types and is involved in many biological processes such as inflammation, immunity, differentiation, cell growth, tumorigenesis and apoptosis.

Notable Publications

Author	Pubmed ID	Journal	Application
Xinhua Xiao	28906487	Cell Death Dis	WB
Li Chen	32492708	J Clin Endocrinol Metab	WB
Lu Jiang	26192917	Nat Genet	WB, IHC

Storage

Storage:

Store at -20°C. Stable for one year after shipment.

Storage Buffer:

PBS with 0.02% sodium azide and 50% glycerol pH 7.3.

Aliquoting is unnecessary for -20°C storage

For technical support and original validation data for this product please contact:

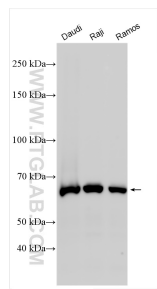
T: 4006900926

E: Proteintech-CN@ptglab.com

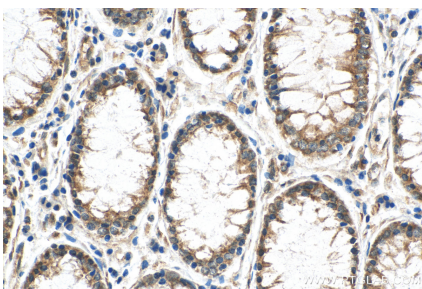
W: ptgcn.com

This product is exclusively available under Proteintech Group brand and is not available to purchase from any other manufacturer.

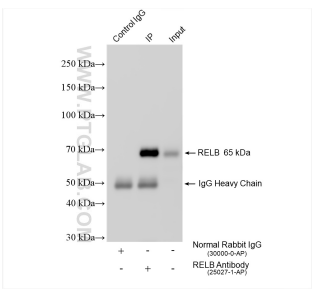
Selected Validation Data



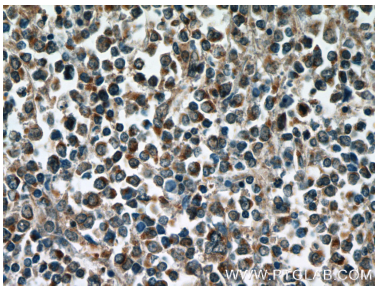
Various lysates were subjected to SDS PAGE followed by western blot with 25027-1-AP (RELB antibody) at dilution of 1:4000 incubated at room temperature for 1.5 hours.



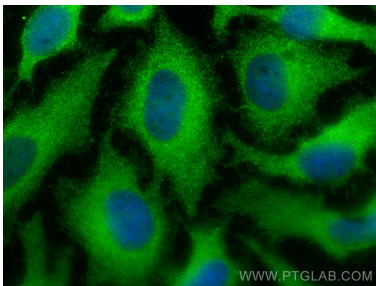
Immunohistochemical analysis of paraffin-embedded human colon cancer tissue slide using 25027-1-AP (RELB antibody) at dilution of 1:200 (under 40x lens). Heat mediated antigen retrieval with Tris-EDTA buffer (pH 9.0).



IP result of anti-RELB (IP:25027-1-AP, 4ug; Detection:25027-1-AP 1:3000) with Raji cells lysate 1600 ug.



Immunohistochemical analysis of paraffin-embedded human lymphoma tissue slide using 25027-1-AP (RELB Antibody) at dilution of 1:50 (under 40x lens).



Immunofluorescent analysis of (-20°C Methanol) fixed HeLa cells using RELB antibody (25027-1-AP) at dilution of 1:400 and CoraLite®488-Conjugated AffiniPure Goat Anti-Rabbit IgG(H+L).