

For Research Use Only

LRCH1 Polyclonal antibody, PBS Only

Catalog Number:25017-1-PBS



Basic Information

Catalog Number:

25017-1-PBS

Size:

1 mg/ml

Source:

Rabbit

Isotype:

IgG

Immunogen Catalog Number:

AG18728

GenBank Accession Number:

BC112937

GeneID (NCBI):

23143

UNIPROT ID:

Q9Y2L9

Full Name:

leucine-rich repeats and calponin
homology (CH) domain containing 1

Calculated MW:

728 aa, 80 kDa

Observed MW:

85-95 kDa

Purification Method:

Antigen affinity purification

Applications

Tested Applications:

WB, IHC, IF/ICC, IP, Indirect ELISA

Species Specificity:

human, mouse

Background Information

LRCH1, also named as CHDC1 or Neuronal protein 81, is a 728 amino acid protein, which contains one CH domain and nine LRR repeats. The molecular weight of LRCH1 is 81 kDa and it contains phosphorylation modified residues. we detected a 85-95 kDa protein by western blot. The function of LRCH1 is still non-known.

Storage

Storage:

Store at -80°C.

The product is shipped with ice packs. Upon receipt, store it immediately at -80°C

Storage Buffer:

PBS Only

For technical support and original validation data for this product please contact:

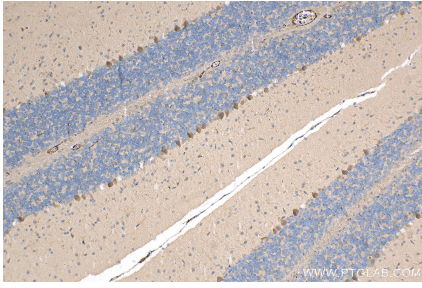
T: 4006900926

E: Proteintech-CN@ptglab.com

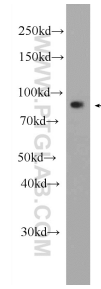
W: ptgcn.com

This product is exclusively available under Proteintech Group brand and is not available to purchase from any other manufacturer.

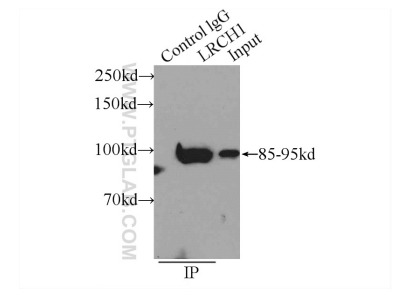
Selected Validation Data



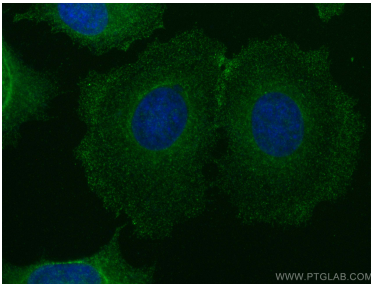
Immunohistochemical analysis of paraffin-embedded mouse cerebellum tissue slide using 25017-1-AP (LRCH1 antibody) at dilution of 1:200 (under 10x lens). Heat mediated antigen retrieval with Tris-EDTA buffer (pH 9.0). This data was developed using the same antibody clone with 25017-1-PBS in a different storage buffer formulation.



HeLa cells were subjected to SDS PAGE followed by western blot with 25017-1-AP (LRCH1 Antibody) at dilution of 1:1000 incubated at room temperature for 1.5 hours. This data was developed using the same antibody clone with 25017-1-PBS in a different storage buffer formulation.



IP result of anti-LRCH1 (IP:25017-1-AP, 4ug; Detection:25017-1-AP 1:300) with HeLa cells lysate 1600ug. This data was developed using the same antibody clone with 25017-1-PBS in a different storage buffer formulation.



Immunofluorescent analysis of (-20°C Methanol) fixed MCF-7 cells using LRCH1 antibody (25017-1-AP) at dilution of 1:200 and CoraLite®488-Conjugated AffiniPure Goat Anti-Rabbit IgG(H+L) (SA00013-2). This data was developed using the same antibody clone with 25017-1-PBS in a different storage buffer formulation.