

For Research Use Only

SUMF1 Polyclonal antibody

Catalog Number: 25015-1-AP

1 Publications



Basic Information

Catalog Number:

25015-1-AP

Size:

350 µg/ml

Source:

Rabbit

Isotype:

IgG

Immunogen Catalog Number:

AG19998

GenBank Accession Number:

BC121122

GeneID (NCBI):

285362

UNIPROT ID:

Q8NBK3

Full Name:

sulfatase modifying factor 1

Calculated MW:

374 aa, 41 kDa

Observed MW:

45-50 kDa

Purification Method:

Antigen affinity purification

Recommended Dilutions:

WB 1:500-1:2000

Applications

Tested Applications:

WB, ELISA

Cited Applications:

WB

Species Specificity:

human, mouse

Cited Species:

human

Positive Controls:

WB : mouse liver tissue,

Background Information

Notable Publications

Author	Pubmed ID	Journal	Application
Ping Zhang	38460946	Aging (Albany NY)	WB

Storage

Storage:

Store at -20°C. Stable for one year after shipment.

Storage Buffer:

PBS with 0.02% sodium azide and 50% glycerol pH 7.3.

Aliquoting is unnecessary for -20°C storage

For technical support and original validation data for this product please contact:

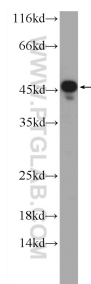
T: 4006900926

E: Proteintech-CN@ptglab.com

W: ptgcn.com

This product is exclusively available under Proteintech Group brand and is not available to purchase from any other manufacturer.

Selected Validation Data



mouse liver tissue were subjected to SDS PAGE followed by western blot with 25015-1-AP (SUMF1 Antibody) at dilution of 1:1000 incubated at room temperature for 1.5 hours.