

For Research Use Only

GRIA1 Polyclonal antibody

Catalog Number: 25012-1-AP

5 Publications



Basic Information

Catalog Number:

25012-1-AP

Concentration:

220 µg/ml

Source:

Rabbit

Isotype:

IgG

Immunogen Catalog Number:

AG21502

GenBank Accession Number:

BC111734

GeneID (NCBI):

2890

UNIPROT ID:

P42261

Full Name:

glutamate receptor, ionotropic, AMPA

1

Calculated MW:

906 aa, 102 kDa

Observed MW:

100 kDa

Purification Method:

Antigen affinity purification

Recommended Dilutions:

WB 1:500-1:2000

IHC 1:50-1:500

Applications

Tested Applications:

WB, IHC, ELISA

Cited Applications:

WB, IHC, IF

Species Specificity:

human, Rat, Mouse

Cited Species:

mouse, rat

Note-IHC: suggested antigen retrieval with TE buffer pH 9.0; (*) Alternatively, antigen retrieval may be performed with citrate buffer pH 6.0

Positive Controls:

WB : mouse cerebellum tissue, rat cerebellum tissue

IHC : human brain tissue, mouse brain tissue

Background Information

Glutamate receptors are the predominant excitatory neurotransmitter receptors in the mammalian brain and are activated in a variety of normal neurophysiologic processes. These receptors are heteromeric protein complexes with multiple subunits, each possessing transmembrane regions, and all arranged to form a ligand-gated ion channel. The classification of glutamate receptors is based on their activation by different pharmacologic agonists. This gene belongs to a family of alpha-amino-3-hydroxy-5-methyl-4-isoxazole propionate (AMPA) receptors.

Notable Publications

Author	Pubmed ID	Journal	Application
Jinghua Shen	39788477	Food Chem Toxicol	WB,IF
Bo Pang	39611623	Behav Pharmacol	WB
Laikang Yu	39404372	Cells	WB

Storage

Storage:

Store at -20°C. Stable for one year after shipment.

Storage Buffer:

PBS with 0.02% sodium azide and 50% glycerol pH 7.3.

Aliquoting is unnecessary for -20°C storage

For technical support and original validation data for this product please contact:

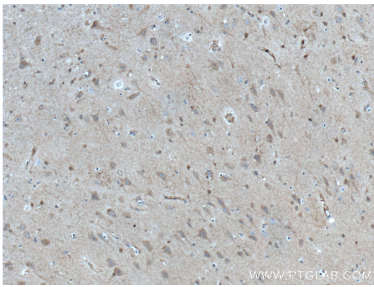
T: 4006900926

E: Proteintech-CN@ptglab.com

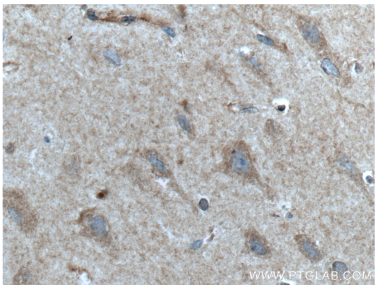
W: ptgcn.com

This product is exclusively available under Proteintech Group brand and is not available to purchase from any other manufacturer.

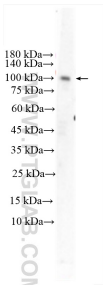
Selected Validation Data



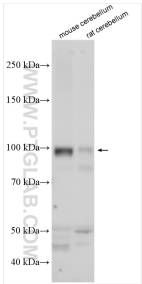
Immunohistochemical analysis of paraffin-embedded human brain tissue slide using 25012-1-AP (GRIA1 Antibody) at dilution of 1:200 (under 10x lens). Heat mediated antigen retrieval with Tris-EDTA buffer (pH 9.0).



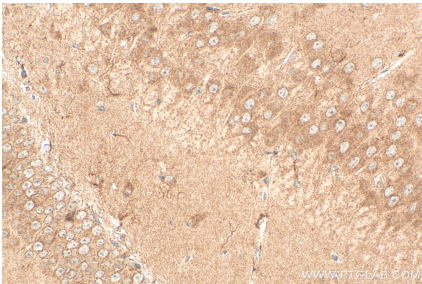
Immunohistochemical analysis of paraffin-embedded human brain tissue slide using 25012-1-AP (GRIA1 Antibody) at dilution of 1:200 (under 40x lens). Heat mediated antigen retrieval with Tris-EDTA buffer (pH 9.0).



mouse cerebellum tissue were subjected to SDS PAGE followed by western blot with 25012-1-AP (GRIA1 antibody) at dilution of 1:1000 incubated at room temperature for 1.5 hours.



Various lysates were subjected to SDS PAGE followed by western blot with 25012-1-AP (GRIA1 antibody) at dilution of 1:1000 incubated at room temperature for 1.5 hours.



Immunohistochemical analysis of paraffin-embedded mouse brain tissue slide using 25012-1-AP (GRIA1 antibody) at dilution of 1:200 (under 40x lens). Heat mediated antigen retrieval with Tris-EDTA buffer (pH 9.0).