

For Research Use Only

HCLS1 Polyclonal antibody

Catalog Number: 25003-1-AP **2 Publications**



Basic Information

Catalog Number: 25003-1-AP	GenBank Accession Number: BC016758	Purification Method: Antigen affinity purification
Size: 500 µg/ml	GeneID (NCBI): 3059	Recommended Dilutions: WB 1:500-1:2000 IHC 1:20-1:200
Source: Rabbit	UNIPROT ID: P14317	
Isotype: IgG	Full Name: hematopoietic cell-specific Lyn substrate 1	
Immunogen Catalog Number: AG8645	Calculated MW: 486 aa, 54 kDa	
	Observed MW: 75 kDa	

Applications

Tested Applications: IHC, WB, ELISA	Positive Controls: WB : Jurkat cells, IHC : human tonsillitis tissue,
Cited Applications: WB, IHC	
Species Specificity: human	
Cited Species: human, canine	

Note-IHC: suggested antigen retrieval with TE buffer pH 9.0; (*) Alternatively, antigen retrieval may be performed with citrate buffer pH 6.0

Background Information

Hematopoietic cell-specific Lyn substrate 1 (HS1, HCLS1, LckBP1 and p75) is a 75-kDa intracellular protein expressed in cells of lymphohemopoietic origin. It was originally identified in B-lymphocytes as a major substrate of B-cell receptor (BCR)-induced phosphorylation after antigen (Ag) stimulation. It's a substrate of the antigen receptor-coupled tyrosine kinase. HCLS1 plays a role in antigen receptor signaling for both clonal expansion and deletion in lymphoid cells.

Notable Publications

Author	Pubmed ID	Journal	Application
Jinguo Zhang	33042828	Front Oncol	IHC
Geng Liu	37896995	Vaccines (Basel)	WB

Storage

Storage:
Store at -20°C. Stable for one year after shipment.
Storage Buffer:
PBS with 0.02% sodium azide and 50% glycerol pH 7.3.
Aliquoting is unnecessary for -20°C storage

For technical support and original validation data for this product please contact:

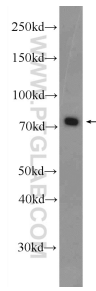
T: 4006900926

E: Proteintech-CN@ptglab.com

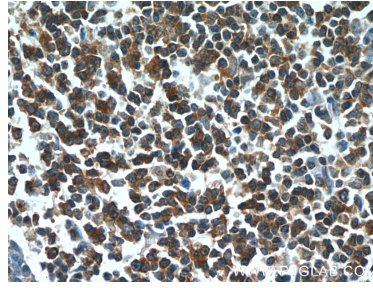
W: ptgcn.com

This product is exclusively available under Proteintech Group brand and is not available to purchase from any other manufacturer.

Selected Validation Data



Jurkat cells were subjected to SDS PAGE followed by western blot with 25003-1-AP (HCLS1 Antibody) at dilution of 1:1000 incubated at room temperature for 1.5 hours.



Immunohistochemical analysis of paraffin-embedded human tonsillitis tissue slide using 25003-1-AP (HCLS1 Antibody) at dilution of 1:50 (under 40x lens).