

For Research Use Only

RPL22 Polyclonal antibody

Catalog Number: 25002-1-AP

Featured Product

9 Publications



Basic Information

Catalog Number:

25002-1-AP

Concentration:

600 ug/ml

Source:

Rabbit

Isotype:

IgG

Immunogen Catalog Number:

AG21851

GenBank Accession Number:

BC058887

GeneID (NCBI):

6146

UNIPROT ID:

P35268

Full Name:

ribosomal protein L22

Calculated MW:

15 kDa

Observed MW:

15-18 kDa

Purification Method:

Antigen affinity purification

Recommended Dilutions:

WB 1:500-1:1000

IP 0.5-4.0 ug for 1.0-3.0 mg of total protein lysate

IF/ICC 1:50-1:500

Applications

Tested Applications:

WB, IF/ICC, IP, ELISA

Cited Applications:

WB, IF, IP

Species Specificity:

human

Cited Species:

human, mouse

Positive Controls:

WB : A431 cells, HepG2 cells, HeLa cells, Jurkat cells

IP : A431 cells,

IF/ICC : HeLa cells,

Background Information

Notable Publications

Author	Pubmed ID	Journal	Application
Naomi R Genuth	36123354	Nat Commun	WB
Yujuan Fu	36282216	J Cell Biol	WB
Suman Rimal	34663454	Acta Neuropathol Commun	WB,IP,IF

Storage

Storage:

Store at -20°C. Stable for one year after shipment.

Storage Buffer:

PBS with 0.02% sodium azide and 50% glycerol pH 7.3.

Aliquoting is unnecessary for -20°C storage

For technical support and original validation data for this product please contact:

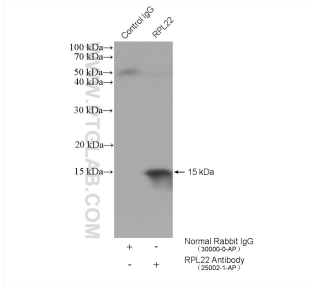
T: 4006900926

E: Proteintech-CN@ptglab.com

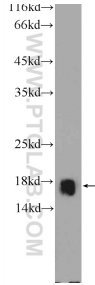
W: ptgcn.com

This product is exclusively available under Proteintech Group brand and is not available to purchase from any other manufacturer.

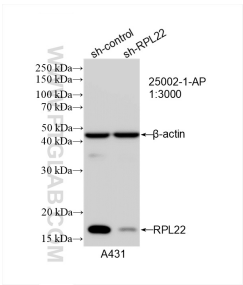
Selected Validation Data



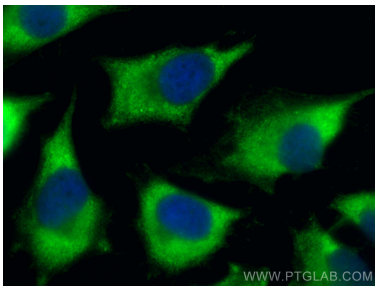
IP result of anti-RPL22 (IP:25002-1-AP, 4ug; Detection:25002-1-AP 1:500) with A431 cells lysate 1920 ug.



A431 cells were subjected to SDS PAGE followed by western blot with 25002-1-AP (RPL22 Antibody) at dilution of 1:600 incubated at room temperature for 1.5 hours.



WB result of RPL22 antibody (25002-1-AP; 1:3000; incubated at room temperature for 1.5 hours) with sh-Control and sh-RPL22 transfected A431 cells.



Immunofluorescent analysis of (-20°C Methanol) fixed HeLa cells using RPL22 antibody (25002-1-AP) at dilution of 1:200 and CoraLite®488-Conjugated AffiniPure Goat Anti-Rabbit IgG(H+L).