

For Research Use Only

TNFRSF6B Polyclonal antibody, PBS Only

Catalog Number: 24999-1-PBS



Basic Information

Catalog Number:

24999-1-PBS

Concentration:

1 mg/ml

Source:

Rabbit

Isotype:

IgG

Immunogen Catalog Number:

AG19781

GenBank Accession Number:

BC017065

GeneID (NCBI):

8771

UNIPROT ID:

O95407

Full Name:

tumor necrosis factor receptor
superfamily, member 6b, decoy

Calculated MW:

300 aa, 33 kDa

Observed MW:

32 kDa

Purification Method:

Antigen affinity purification

Applications

Tested Applications:

WB, FC (Intra), IP, Indirect ELISA

Species Specificity:

human

Background Information

Storage

Storage:

Store at -80°C.

The product is shipped with ice packs. Upon receipt, store it immediately at -80°C

Storage Buffer:

PBS Only

For technical support and original validation data for this product please contact:

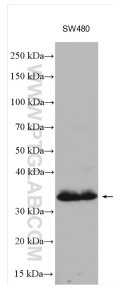
T: 4006900926

E: Proteintech-CN@ptglab.com

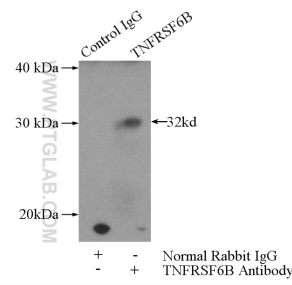
W: ptgcn.com

This product is exclusively available under Proteintech Group brand and is not available to purchase from any other manufacturer.

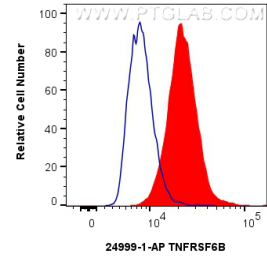
Selected Validation Data



SW480 cells were subjected to SDS PAGE followed by western blot with 24999-1-AP (TNFRSF6B antibody) at dilution of 1:500 incubated at room temperature for 1.5 hours. This data was developed using the same antibody clone with 24999-1-PBS in a different storage buffer formulation.



IP result of anti-TNFRSF6B (IP:24999-1-AP, 4ug; Detection:24999-1-AP 1:300) with HeLa cells lysate 2480ug. This data was developed using the same antibody clone with 24999-1-PBS in a different storage buffer formulation.



1×10^6 SW480 cells were intracellularly stained with 0.25 ug TNFRSF6B Polyclonal antibody (24999-1-AP) and CoraLite@488-Conjugated Goat Anti-Rabbit IgG(H+L) (SA00013-2) (red) or 0.25 ug Isotype Control (blue). Cells were fixed with 4% PFA and permeabilized with Flow Cytometry Perm Buffer (PF00011-C). This data was developed using the same antibody clone with 24999-1-PBS in a different storage buffer formulation.