

For Research Use Only

TNFRSF6B Polyclonal antibody

Catalog Number: 24999-1-AP

1 Publications



Basic Information

Catalog Number:

24999-1-AP

Concentration:

900 ug/ml

Source:

Rabbit

Isotype:

IgG

Immunogen Catalog Number:

AG19781

GenBank Accession Number:

BC017065

GeneID (NCBI):

8771

UNIPROT ID:

O95407

Full Name:

tumor necrosis factor receptor
superfamily, member 6b, decoy

Calculated MW:

300 aa, 33 kDa

Observed MW:

32 kDa

Purification Method:

Antigen affinity purification

Recommended Dilutions:

WB 1:500-1:1000

IP 0.5-4.0 ug for 1.0-3.0 mg of total
protein lysate

Applications

Tested Applications:

WB, FC (Intra), IP, ELISA

Cited Applications:

WB

Species Specificity:

human

Cited Species:

human

Positive Controls:

WB : SW480 cells,

IP : HeLa cells,

Background Information

Notable Publications

Author	Pubmed ID	Journal	Application
Nasha Zhang	37999979	Cell Rep	WB

Storage

Storage:

Store at -20°C. Stable for one year after shipment.

Storage Buffer:

PBS with 0.02% sodium azide and 50% glycerol pH 7.3.

Aliquoting is unnecessary for -20°C storage

For technical support and original validation data for this product please contact:

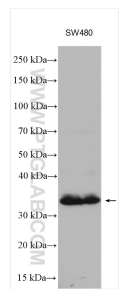
T: 4006900926

E: Proteintech-CN@ptglab.com

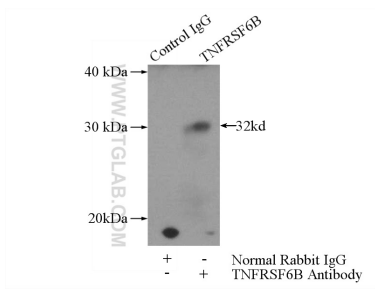
W: ptgcn.com

This product is exclusively available under Proteintech Group brand and is not available to purchase from any other manufacturer.

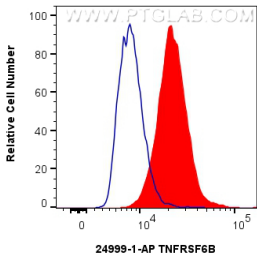
Selected Validation Data



SW480 cells were subjected to SDS PAGE followed by western blot with 24999-1-AP (TNFRSF6B antibody) at dilution of 1:500 incubated at room temperature for 1.5 hours.



IP result of anti-TNFRSF6B (IP:24999-1-AP, 4ug; Detection:24999-1-AP 1:300) with HeLa cells lysate 2480ug.



1x10⁶ SW480 cells were intracellularly stained with 0.25 ug TNFRSF6B Polyclonal antibody (24999-1-AP) and CoraLite®488-Conjugated Goat Anti-Rabbit IgG(H+L) (SA00013-2) (red) or 0.25 ug Isotype Control (blue). Cells were fixed with 4% PFA and permeabilized with Flow Cytometry Perm Buffer (PF00011-C).