

KHDC3L Polyclonal antibody

Catalog Number: 24989-1-AP

Basic Information

Catalog Number:

24989-1-AP

Size:

1000 ug/ml

Source:

Rabbit

Isotype:

IgG

Immunogen Catalog Number:

AG21790

GenBank Accession Number:

BC137160

GeneID (NCBI):

154288

UNIPROT ID:

Q587J8

Full Name:

chromosome 6 open reading frame

221

Calculated MW:

217 aa, 24 kDa

Observed MW:

21-24 kDa

Purification Method:

Antigen affinity purification

Recommended Dilutions:

WB 1:500-1:1000

IHC 1:20-1:200

IF/ICC 1:50-1:500

Applications

Tested Applications:

WB, IHC, IF/ICC, ELISA

Species Specificity:

human

Note-IHC: suggested antigen retrieval with *TE buffer pH 9.0*; (*) Alternatively, antigen retrieval may be performed with *citrate buffer pH 6.0*

Positive Controls:

WB : human testis tissue,

IHC : human liver cancer tissue,

IF/ICC : HepG2 cells,

Background Information

KHDC3L (also known as Filia and ES cell-associated transcript1 [Ecat1]) as a key regulator in safeguarding the genomic stability of mouse early embryonic cells. KHDC3L is critical in preventing the replication associated DNA DSBs in epiblast cells (PMID: 29125140). Importantly, by analyzing KHDC3L mutations causes recurrent pregnancy loss by inducing genomic instability of human early embryonic cells (PMID: 31609975).

Storage

Storage:

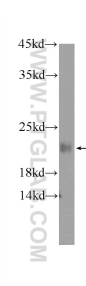
Store at -20°C. Stable for one year after shipment.

Storage Buffer:

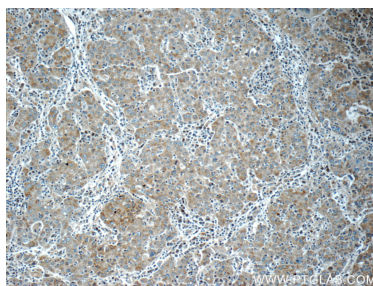
PBS with 0.02% sodium azide and 50% glycerol pH 7.3.

Aliquoting is unnecessary for -20°C storage

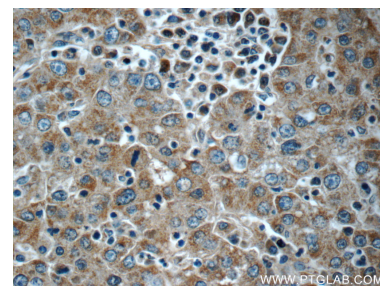
Selected Validation Data



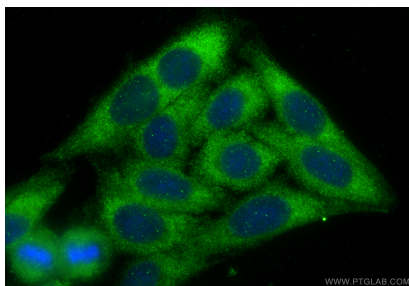
human testis tissue were subjected to SDS PAGE followed by western blot with 24989-1-AP (KHDC3L antibody at dilution of 1:600 incubated at room temperature for 1.5 hours.



Immunohistochemical analysis of paraffin-embedded human liver cancer tissue slide using 24989-1-AP (KHDC3L antibody at dilution of 1:50 (under 10x lens).



Immunohistochemical analysis of paraffin-embedded human liver cancer tissue slide using 24989-1-AP (KHDC3L antibody at dilution of 1:50 (under 40x lens).



Immunofluorescent analysis of (-20°C Ethanol) fixed HepG2 cells using KHDC3L antibody (24989-1-AP) at dilution of 1:200 and CoraLite®488-Conjugated Goat Anti-Rabbit IgG(H+L) (SA00013-2).