

For Research Use Only

C10orf68 Polyclonal antibody, PBS Only

Catalog Number: 24975-1-PBS



Basic Information

Catalog Number:

24975-1-PBS

Concentration:

1 mg/ml

Source:

Rabbit

Isotype:

IgG

Immunogen Catalog Number:

AG21682

GenBank Accession Number:

BC125091

GeneID (NCBI):

79741

UNIPROT ID:

Q96M83

Full Name:

chromosome 10 open reading frame
68

Calculated MW:

628 aa, 71 kDa

Observed MW:

65 kDa

Purification Method:

Antigen affinity purification

Applications

Tested Applications:

WB, IHC, IF/ICC, Indirect ELISA

Species Specificity:

human, monkey

Background Information

chromosome 10 open reading frame 68 (C10orf68) is a 628 amino-acid protein, which may have three isoforms. The function of C10orf68 is still non-known and needs to be further studied.

Storage

Storage:

Store at -80°C.

The product is shipped with ice packs. Upon receipt, store it immediately at -80°C

Storage Buffer:

PBS Only

For technical support and original validation data for this product please contact:

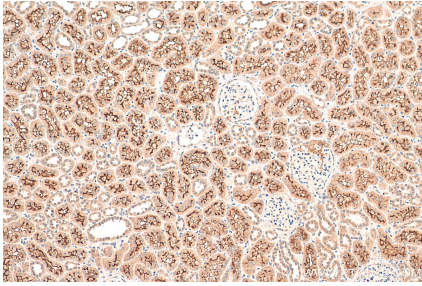
T: 4006900926

E: Proteintech-CN@ptglab.com

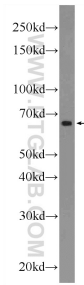
W: ptgcn.com

This product is exclusively available under Proteintech Group brand and is not available to purchase from any other manufacturer.

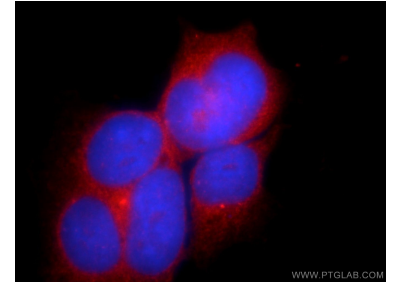
Selected Validation Data



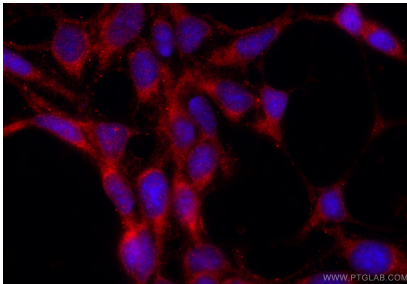
Immunohistochemical analysis of paraffin-embedded human kidney tissue slide using 24975-1-AP (C10orf68 antibody) at dilution of 1:200 (under 10x lens). Heat mediated antigen retrieval with Tris-EDTA buffer (pH 9.0). This data was developed using the same antibody clone with 24975-1-PBS in a different storage buffer formulation.



A549 cells were subjected to SDS PAGE followed by western blot with 24975-1-AP (C10orf68 Antibody) at dilution of 1:600 incubated at room temperature for 1.5 hours. This data was developed using the same antibody clone with 24975-1-PBS in a different storage buffer formulation.



Immunofluorescent analysis of HEK-293 cells using 24975-1-AP (C10orf68 antibody) at dilution of 1:25 and Rhodamine-Goat anti-Rabbit IgG. This data was developed using the same antibody clone with 24975-1-PBS in a different storage buffer formulation.



Immunofluorescent analysis of (-20°C Ethanol) fixed HEK-293 cells using C10orf68 antibody (24975-1-AP) at dilution of 1:200 and CoraLite®594-Conjugated Goat Anti-Rabbit IgG(H+L) (SA00013-4). This data was developed using the same antibody clone with 24975-1-PBS in a different storage buffer formulation.